

ARMY TM 11-5895-1220-20P
NAVY EE160-RG-MIB-010/W110-GRC215
AIR FORCE TO 31R2-2GRC215-4

TECHNICAL MANUAL

**ORGANIZATIONAL MAINTENANCE
REPAIR PARTS AND SPECIAL TOOLS LIST
FOR
RADIO SET
AN/GRC-215
(NSN 5895-01-156-0456) (EIC: LMG)**

Distribution authorized to the Department of Defense and DOD contractors only for official use or for administrative or operational purposes. This determination was made on 15 February 1991. Other requests for this document will be referred to Commander, US Army Communications-Electronics Command and Fort Monmouth, ATTN: AMSEL-LC-LM-LT, Fort Monmouth, New Jersey 07703-5007.

DESTRUCTION NOTICE - Destroy by any method that will prevent disclosure of contents or reconstruction of the document.

DEPARTMENTS OF THE ARMY, THE NAVY, AND THE AIR FORCE

1 AUGUST 1992

ARMY TM 11-5895-1220-20P
NAVY EE160-RG-MIB-010/W110-GRC215
AIR FORCE TO 31R2-2GRC215-4

TECHNICAL MANUAL

**ORGANIZATIONAL MAINTENANCE
REPAIR PARTS AND SPECIAL TOOLS LIST
FOR
RADIO SET
AN/GRC-215
(NSN 5895-01-156-0456) (EIC: LMG)**

Distribution authorized to the Department of Defense and DOD contractors only for official use or for administrative or operational purposes. This determination was made on 15 February 1991. Other requests for this document will be referred to Commander, US Army Communications-Electronics Command and Fort Monmouth, ATTN: AMSEL-LC-LM-LT, Fort Monmouth, New Jersey 07703-5007.

DESTRUCTION NOTICE - Destroy by any method that will prevent disclosure of contents or reconstruction of the document.

DEPARTMENTS OF THE ARMY, THE NAVY, AND THE AIR FORCE

1 AUGUST 1992

Technical Manual
No. 11-5895-1220-20P
NAVY EE160-RG-MIB-010/W110-GRC215
Technical Order
No. 31R2-2GRC215-4

DEPARTMENTS OF THE ARMY,
THE NAVY, AND THE AIR FORCE

Washington, DC, 1 August 1992

ORGANIZATIONAL MAINTENANCE
REPAIR PARTS AND SPECIAL TOOLS LIST
FOR
RADIO SET AN/GRC-215
(NSN 5895-01-156-0456) (EIC: LMG)

Current as of 1 May 1992

REPORTING ERRORS AND RECOMMENDING IMPROVEMENTS

You can help improve this manual. If you find any mistakes or if you know of a way to improve the procedures, please let us know. Mail your letter, DA Form 2028 (Recommended Changes to Publications and Blank Forms), or DA Form 2028-2 located in back of this manual direct to: Commander, US Army Communications-Electronics Command and Fort Monmouth, ATTN: AMSEL-LC-LM-LT, Fort Monmouth, New Jersey 07703-5000.

For Air Force, submit AFTO Form 22 (Technical Order System Publication Improvement Report and Replay) in accordance with paragraph 6-5, Section VI, TO 00-5-1. Forward direct to prime ALC/MST.

For Navy, mail comments to the Commander, Space and Naval Warfare Systems Command, ATTN: SPAWAR 8122, Washington, DC 20363-5100.

In either case, a reply will be furnished direct to you.

TABLE OF CONTENTS

		Page	Illus Figure
Section	I. Introduction	1	
	II. Repair Parts List	1-1	
Group	00 Radio Set AN/GRC-215 (A3023743)	1-1	1
	01 Antenna Assembly AS-3809/G, E2, (A3034093)	2-1	2

* This manual supercedes TM 11-5895-1220-20P dated 15 March 1990

TABLE OF CONTENTS--Continued

Group		Page	Illus/ Figure
02	Receiver-Transmitter, Radio RT-1511/GRC-215, A1, (A3023795) (refer to TM 11-5895-1318-24P)		
03	Mounting Base, Electrical Equip. MT-6452/GRC-215, A2, (A3023796) (refer to TM 11-5895-1321-24P)		
04	Amplifier, Power AM-7301/GRC-215, A3 (A3023797) (refer to TM 11-5895-1319-24P)		
05	Battery Case/Charger (A3023798)	3-1	3
	0501 Battery Case Assy (A3030350) (No parts authorized)		
	050101 Circuit Card Assembly, Battery Case (A3031535) (No parts authorized)		
06	Coupler, Antenna CU-2351/GRC-215, A4 (A3023799) (refer to TM 11-5985-378-24P)		
07	Converter CV-3968/GRC-215, A13, (A3023801) (refer to TM 11-5895-1309-24P)		
07A	Harness, Electrical (A3023804) (See Figure 1 for parts)		
08	Modem, Digital Data MD-1204/G, A8, (A3023769) (refer to TM 11-5895-1307-24P)		
09	Power Supply PP-8170/GRC-215, A9, (A3023808) (refer to TM 11-5895-1320-24P)		
10	Oscillator, Reference Freq. O-1836/G, A10 (A3023762) (refer to TM 11-5895-1312-24P)		
11	Rack/Pallet Assy, A11, (A3023810) (No parts authorized)		
	1101 Power Junction (A3023815) (No parts authorized)		
	1102 Controller Mount (A3023816) (No parts authorized)		
	1103 RFO Mount (A3023817) (No parts authorized.)		
	1104 Modem Mount (A3023818) (No parts authorized.)		
	1105 Mount Assy, PDU (A3023952) (No parts authorized.)		
	1106 Control Junction (A3028234) (No parts authorized.)		
	1107 Bypass Assy, KG-84A (A3029355) (No parts authorized.)		
	1108 Plenum Assy, Fan (A3032075) (No parts authorized.)		
	1109 Stowage Box Assy (A3078159) (No parts authorized.)		

TABLE OF CONTENTS - Continued

Group	Page	Illus/ Figure
12 I/O Unit MX-10819/GRC-215, A12, (A3023811) (refer to TM 11-5895-1322-24P)		
13 Vehicle Installation Kit MK-2211/GRC-215 (A3023812) (No parts authorized)		
14 Cable Assembly, Power, Elec. CX-13348/GRC-215 (A3023949) (No parts authorized)		
15 Adapter, Antenna MX-9313/GR (No Parts authorized, replacement only)		
16 Antenna, NVIS AS-2259/GRC, E1 (refer to TM 11-5985-379-14&P)		
17 Battery Pack Z-AKG/TSEC (refer to TM 11-5810-280-12&P)		
18 Key Generator, Electronic TSEC/KG-84A, A7 (refer to TM 11-5810-308-12&P)		
19 COMSEC Device TSEC/KY-65A, A5 (refer TO TM 11-5810-280-12&P)		
20 AC/DC Power Supply TSEC Z-AKE/TSEC Assy, A6 (refer to TM 11-5810-280-12&P)		
21 Cable Assembly and Reel, CG-3883/G (A3034219)	17A-1	17A
Section III. Special Tools (Not applicable)		
IV. Cross-Reference Indexes		
National Stock Number Index		I-1
Part Number Index		I-2
Figure and Item Number Index		I-3

CHAPTER 1 INTRODUCTION

1. SCOPE

This manual lists and authorizes spares and repair parts; special tools; special test, measurement, and diagnostic equipment (TMDE); and other special support equipment required for the performance of organizational maintenance of Radio Set AN/GRC-215. It authorizes the requisitioning, issue, and disposition of spares, maintenance, and recoverability (SMR) codes.

2. GENERAL

This Repair Parts and Special Tools List is divided into the following sections:

a. *Section II. Repair Parts List.* A list of spares and repair parts authorized by this RPSTL for use in the performance of maintenance. This list also includes parts which must be removed for replacement of the authorized parts. Parts lists are composed of functional groups in ascending item number sequence, with the parts in each group listed in ascending item number sequence. Figure numbers are listed directly beneath the group header.

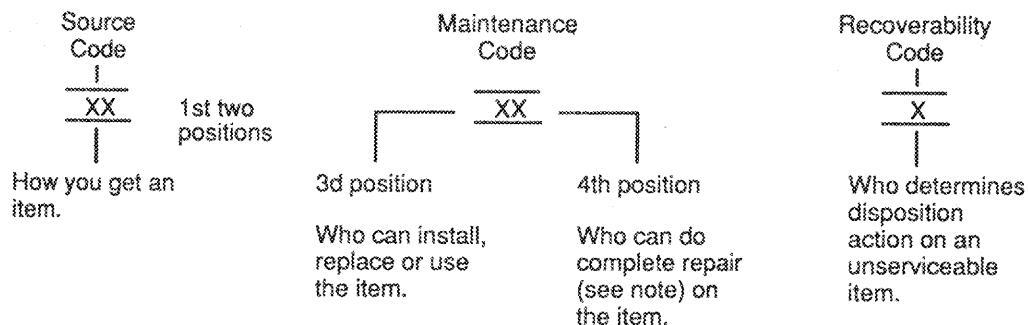
b. *Section III. Special Tools List.* Not applicable.

c. *Section IV. Cross-Reference Indexes.* A list, in National item identification number (NIIN) sequence, of all National stock numbered items appearing in the listing, followed by a list in alphameric sequence of all part numbers appearing in the listings. National stock numbers and part numbers are cross-referenced to each illustration figure and item number appearance. The figure number and item number index lists figure and item numbers in numeric sequence and cross-references National stock number, Commercial and Government Entity Code, and part numbers.

3. EXPLANATION OF COLUMNS (Section II and III)

a. *Item No. (Column (1)).* Indicates the number used to identify items called out in the illustrations.

b. *SMR Code (Column (2)).* The source, maintenance, and recoverability (SMR) code is a five-position code containing supply/requisitioning information, maintenance category authorization criteria and disposition instruction, as shown in the following breakout:



NOTE

Complete repair: Maintenance capacity, capability, and authority to perform all corrective maintenance tasks of

the "repair" function in a use/user environment in order to restore serviceability to a failed item.

(1) *Source code.* The source code tells you how to get an item needed for maintenance, repair, or overhaul of an end item/equipment. Explanations of source codes follows:

<i>Code</i>	<i>Explanation</i>
PA PB PC PD PE PF PG	Stocked items: use the applicable NSN to request/requisition items with these source codes. They are authorized to the category indicated by the code entered in the third position of the SMR code.

NOTE

Items coded PC are subject to deterioration.

KD KF KB	Items with these codes are not to be requested/requisitioned individually. They are part of a kit which is authorized to the maintenance category indicated in the third position of the SMR code. The complete kit must be requisitioned and applied.
----------------	--

MO – Made at org/AVUM category MF – Made at DS/AVIM category MH – Made at GS category ML – Made at Specialized Repair Activity (SRA) MD – Made at Depot	Items with these codes are not to be requested/requisitioned individually. They must be made from bulk material which is identified by the part number in the description and usable on code (UOC) column and listed in the Bulk Material group of the repair parts list. If the item is authorized to you by the third position code of the SMR code, but the source code indicates it is made at a higher category, order the item from the higher category of maintenance.
---	---

AO – Assembled by org/AVUM category AF – Assembled by DS/AVIM category AH – Assembled by GS category AL – Assembled by SRA AD – Assembled by Depot	Items with these codes are not to be requested/requisitioned individually. The parts that make up the assembled item must be requisitioned or fabricated and assembled at the category of maintenance indicated by the source code. If the third position code of the SMR code authorizes you to replace the item, but the source code indicates the item is assembled at a higher category, order the item from the higher category of maintenance.
--	--

<i>Code</i>	<i>Explanation</i>
XA –	Do not requisition an "XA" coded item. Order its next higher assembly.
XB –	If an "XB" item is not available from salvage, order it using the CAGEC and part number given.

- XC - Installation drawing, diagram, instruction sheet, field service drawing, that is identified by manufacturer's part number.
- XD - Item is not stocked. Order an "XD" coded item through normal supply channels using the CAGEC and part number given, if no NSN is available.

NOTE

Cannibalization or controlled exchange, when authorized, may be used as a source of supply for items with the above source codes, except for those source coded "XA" or those aircraft support items restricted by requirements of AR 750-1.

(2) *Maintenance code.* Maintenance codes tell you the category of maintenance authorized to USE and REPAIR support items. The maintenance codes are entered in the third and fourth positions of the SMR code as follows:

(a) The maintenance code entered in the third position tells you the lowest maintenance category authorized to remove, replace, and use an item. The maintenance code entered in the third position will indicate authorization to one of the following categories of maintenance.

<i>Code</i>	<i>Application/Explanation</i>
C -	Crew or operator maintenance done within organizational or aviation maintenance.
O -	Organizational or aviation unit category can remove, replace, and use the item.
F -	Direct support or aviation intermediate category can remove, replace, and use the item.
H -	General support category can remove, replace, and use the item.
L -	Specialized repair activity can remove, replace, and use the item.
D -	Depot category can remove, replace, and use the item.

(b) The maintenance code entered in the fourth position tells whether or not the item is to be repaired and identifies the lowest maintenance category with the capability to do complete repair (i.e., perform all authorized repair functions). This position will contain one of the following maintenance codes.

NOTE

Some limited repair may be done on the item at a lower category of maintenance, if authorized by the Maintenance Allocation Chart (MAC) and SMR codes.

<i>Code</i>	<i>Explanation</i>
O -	Organizational or aviation unit is the lowest category that can do complete repair of the item.
F -	Direct support or aviation intermediate is the lowest category that can do complete repair of the item.
H -	General support is the lowest category that can do complete repair of the item.
L -	Specialized repair activity (designate the specialized repair activity) is the lowest category that can do complete repair of the item.
D -	Depot is the lowest category that can do complete repair of the item.
Z -	Nonreparable. No repair is authorized.
B -	No repair is authorized. (No parts or special tools are assigned for the maintenance of a "B" coded item.) However, the item may be reconditioned by adjusting, lubricating, etc., at the user category.

(3) *Recoverability code.* Recoverability codes are assigned to items to indicate the disposition action on unserviceable items. The recoverability code is entered in the fifth position of the SMR code as follows:

Recoverability

<i>Code</i>	<i>Application/Explanation</i>
Z -	Nonreparable item. When unserviceable, condemn and dispose of the item at the category of maintenance shown in the third position of SMR code.
O -	Reparable item. When uneconomically repairable, condemn and dispose of the item at organizational or aviation unit category.

Recoverability

<i>Code</i>	<i>Application/Explanation</i>
-------------	--------------------------------

- F – Reparable item. When uneconomically repairable, condemn and dispose of the item at direct support or aviation intermediate category.
- H – Reparable item. When uneconomically repairable, condemn and dispose of the item at general support category.
- D – Reparable item. When beyond lower category repair capability, return to depot. Condemnation and disposal of item not authorized below depot category.
- L – Reparable item. Condemnation and disposal not authorized below specialized repair activity (SRA).
- A – Item requires special handling or condemnation procedures because of specific reasons (e.g., precious metal content, high dollar value, critical material, or hazardous material. Refer to appropriate manuals/directives for specific instructions.

c. *CAGEC (Column (3))*. The Commercial and Government Entity Code (CAGEC) is a 5-digit numeric code which is used to identify the manufacturer, distributor, or Government agency, etc., that supplies the item.

d. *Part Number (Column (4))*. Indicates the primary number used by the manufacturer (individual, company, firm, corporation, or Government activity), which controls the design and characteristics of the item by means of its engineering drawings, specifications, standards, and inspection requirements to identify an item or range of items.

NOTE

When you use an NSN to requisition an item, the item you receive may have a different part number from the part ordered.

e. *Description and Usable on Code (UOC) (Column (5))*. This column includes the following information.

- (1) The Federal item name and, when required, a minimum description to identify the item.
- (2) Not applicable.

(3) The statement "END OF FIGURE" appears just below the last item description in Column (5) for a given figure in both section II and section III.

f. *Qty (Column (6))*. Indicates the quantity of the item used in the breakout shown on the illustration figure, which is prepared for a functional group, subfunctional group, or an assembly. A "V" appearing in this column in lieu of a quantity indicates that the quantity is variable and the quantity may vary from application to application.

4. EXPLANATION OF COLUMNS (Section IV)

a. *National Stock Number (NSN) Index*.

(1) *Stock number column*. This column lists the NSN by National item identification number (NIIN) sequence. The NIIN consists of the last nine digits of the NSN. When using this column to locate an item, ignore the first four digits of the NSN. When requisitioning items use the complete NSN (13 digits) sequence. The NIIN consists of the last nine digits of the NSN. When using this column to locate an item, ignore the first four digits of the NSN. When requisitioning items use the complete NSN (13 digits).

(2) *Fig. column*. This column lists the number of the figure where the item is identified/located. The illustrations are in numerical sequence in sections II and III.

(3) *Item column*. The item number identifies the item associated with the figure listed in the adjacent Fig. column. This item is also identified by the NSN listed on the same line.

b. *Part Number Index*. Part numbers in this index are listed by part number in ascending alphameric sequence.

(1) *CAGEC column*. This column lists the Commercial and Government Entity Code (CAGEC).

T (2) *Part number column*. This column indicates the part number assigned to the item.

(3) *Stock number column.* This column lists the National stock number for the associated part number and manufacturer identified in the part number and CAGEC columns to the left.

(4) *Fig. column.* This column lists the number of the figure where the item is identified/located in sections II and III.

(5) *Item column.* The item number is that number assigned to the item as it appears in the figure referenced in the adjacent figure number column.

c. Figure and Item Number Index.

(1) *Fig. column.* This column lists the number of the figure where the item is identified/located in sections II and III.

(2) *Item column.* The item number is that number assigned to the item as it appears in the figure referenced in the adjacent figure number column.

(3) *Stock number column.* This column lists the National stock number for the item.

(4) *CAGEC column.* The Commercial and Government Entity Code (CAGEC) is a 5-digit numeric code used to identify the manufacturer, distributor, or Government agency, etc., that supplies the item.

(5) *Part number column.* Indicates the primary number used by the manufacturer (individual, firm, corporation, or Government activity), which controls the design and characteristics of the item by means of its engineering drawings, specifications, standards, and inspection requirements to identify an item or range of items.

5. SPECIAL INFORMATION

a. Associated Publications. The publications listed below pertain to the AN/GRC-215 and its components:

TM 11-5805-752-24, Modem Telephone MD-1201/G

TM 11-5805-752-24P, Modem Telephone MD-1201/G

TM 11-5810-280-12&P, Battery Pack Z-AKG/TSEC

TM 11-5810-308-12&P, Key Generator, Electronic TSEC/KG-84A

TM 11-5895-1220-12, Radio Set AN/GRC-215

TM 11-5895-1220-34, Radio Set AN/GRC-215

TM 11-5895-1309-24, Converter CV-3968/GRC-215

TM 11-5895-1309-24P, Converter CV-3968/GRC-215

TM 11-5895-1312-24, Oscillator, Frequency Reference O-1836/G

TM 11-5895-1312-24P, Oscillator, Frequency Reference O-1836/G

TM 11-5895-1318-24, Receiver/Transmitter RT-1511/GRC-215

TM 11-5895-1318-24P, Receiver/Transmitter RT-1511/GRC-215

TM 11-5895-1319-24, Power Amplifier AM-7301/GRC-215

TM 11-5895-1319-24P, Power Amplifier AM-7301/GRC-215

TM 11-5895-1320-24, Power Supply PP-8170/GRC-215

TM 11-5895-1320-24P, Power Supply PP-8170/GRC-215

TM 11-5895-1321-24, Mounting Base, Electrical Equipment MT-6452/GRC-215

TM 11-5895-1321-24P, Mounting Base, Electrical Equipment MT-6452/GRC-215

TM 11-5895-1322-24, Input-Output Unit MX-10819/GRC-215

TM 11-5895-1322-24P, Input-Output Unit MX-10819/GRC-215

TM 11-5985-378-24, Coupler, Antenna CU-2351/GRC-215

TM 11-5985-378-24P, Coupler, Antenna CU-2351/GRC-215

TM 11-5985-379-14&P, Antenna AS-2259/GR

g. Illustrations - Listing. The illustrations in this RPSTL are identical to those published in TM 11-5895-1220-34P. Only those parts coded "C" or "O" in the third position of the SMR code are listed in the tabular listing; therefore, there may be a break in the item number sequence, figure number and page number. Only

illustrations containing organizational or aviation unit authorized items appear in this RPSTL.

h. National Stock Numbers. National stock numbers (NSN's) that are missing from P source coded items have been applied for and will be added to this TM by future change/revision when they are entered in the Army Master Data File (AMDF). Until the NSN's are established and published, submit exception requisitions to: Commander, US Army Communications-Electronics Command and Fort Monmouth, ATTN: AMSEL-LC-MM, Fort Monmouth, NJ 07703-5007 for the part required to support your equipment.

6. HOW TO LOCATE REPAIR PARTS

a. When National stock number or part number is not known.

(1) *First.* Using the table of contents, determine the assembly group or subassembly group to which the item belongs. This is necessary since figures are prepared for assembly groups and subassembly groups, and listings are divided into the same groups.

(2) *Second.* Find the figure covering the assembly group or subassembly group to which the item belongs.

(3) *Third.* Identify the item on the figure and note the item number.

(4) *Fourth.* Refer to the Repair Parts Lists for the figure to find the part number for the item number noted on the figure.

(5) *Fifth.* Refer to the Part Number Index to find the NSN, if assigned.

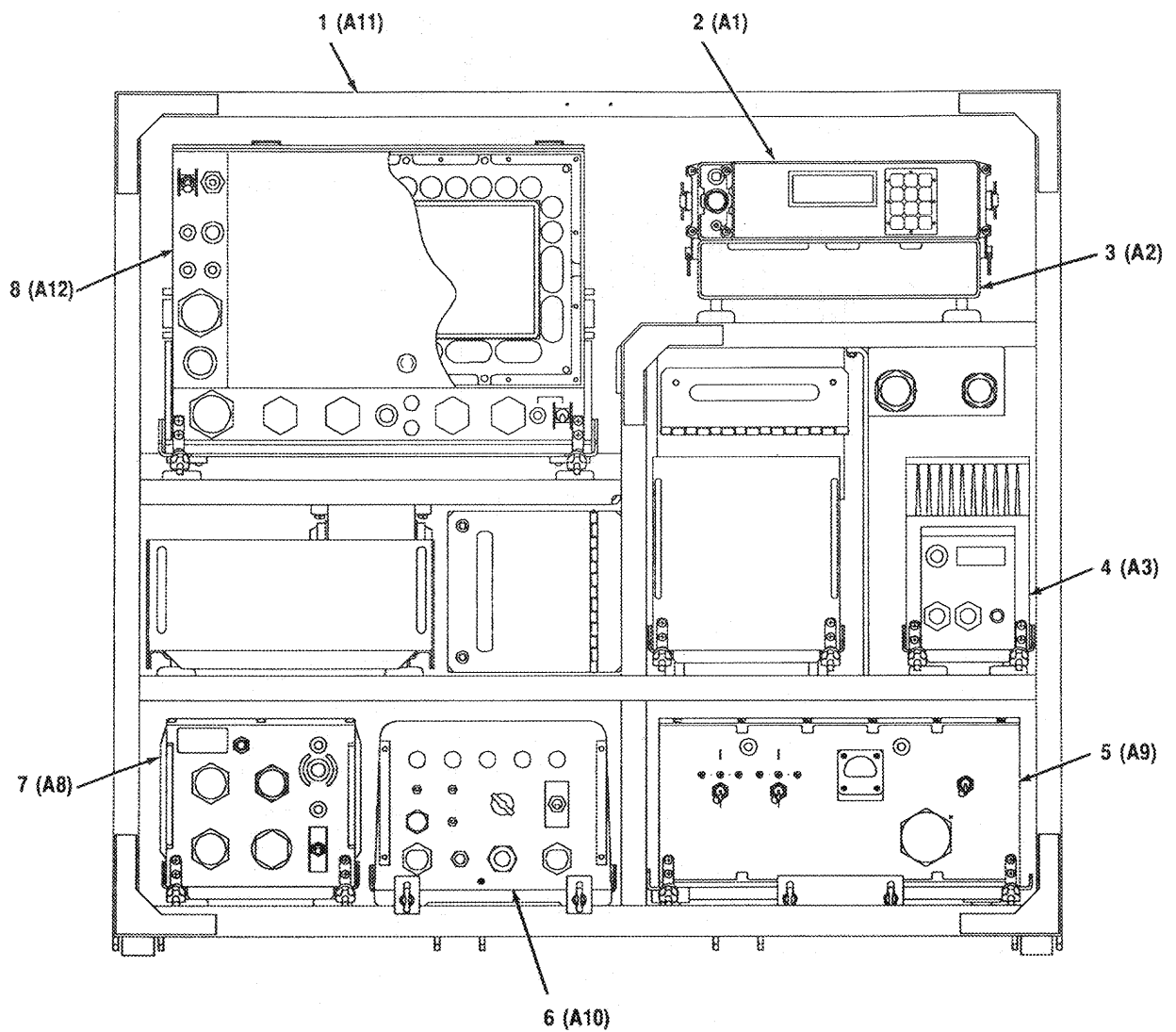
b. When National stock number or part number is known.

(1) *First.* Using the index of National stock numbers and part numbers, find the pertinent National stock number or part number. The NSN index is in National item identification number (NIIN) sequence (para 4a(1)). The part numbers in the part number index are listed in ascending alphameric sequence (para 4b). Both indexes cross-reference you to the illustration figure and item number of the item you are looking for.

(2) *Second.* After finding the figure and item number, verify that the item is the one you're looking for, then locate the item number in the repair parts list for the figure.

7. ABBREVIATIONS

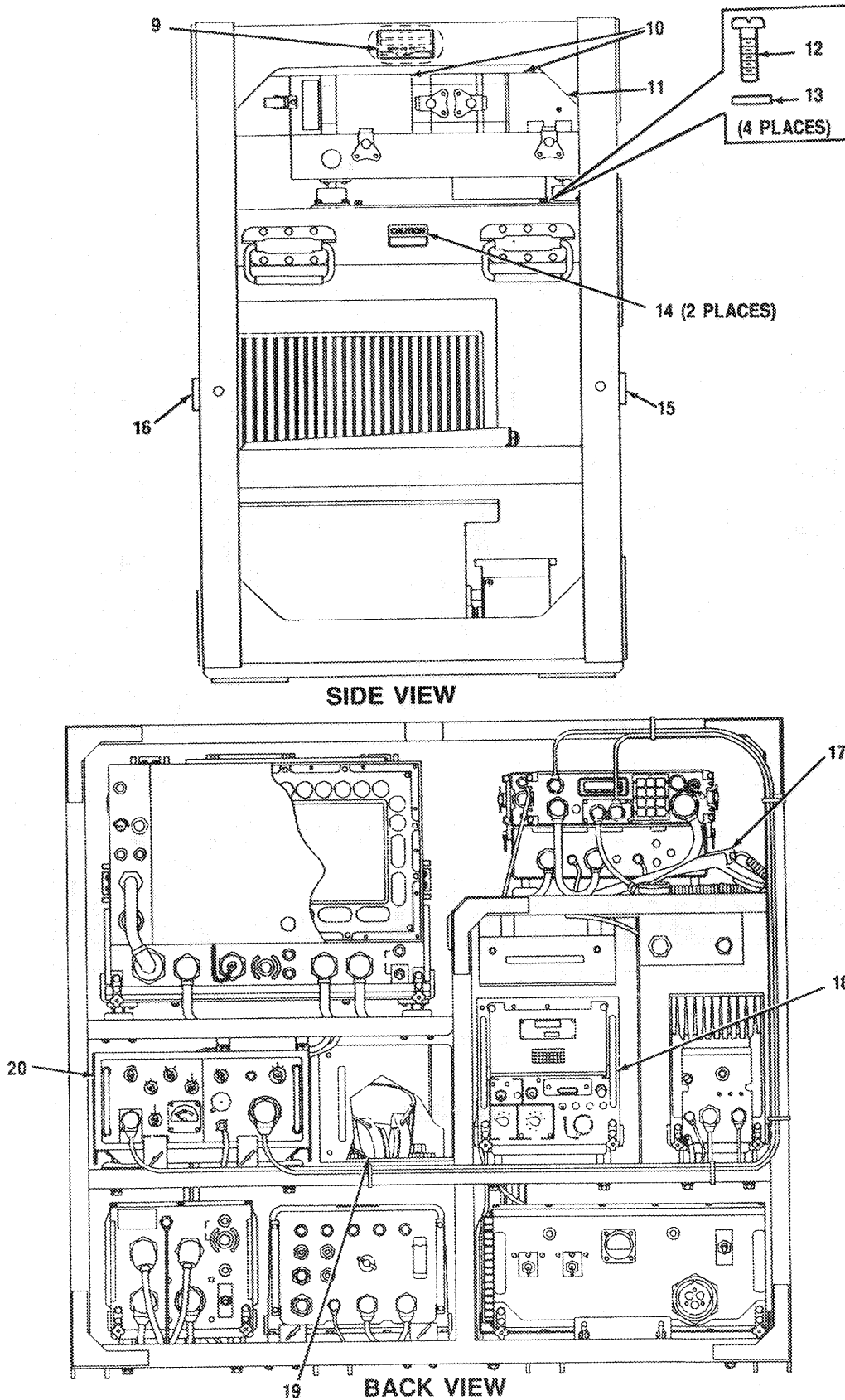
Not applicable.



FRONT VIEW

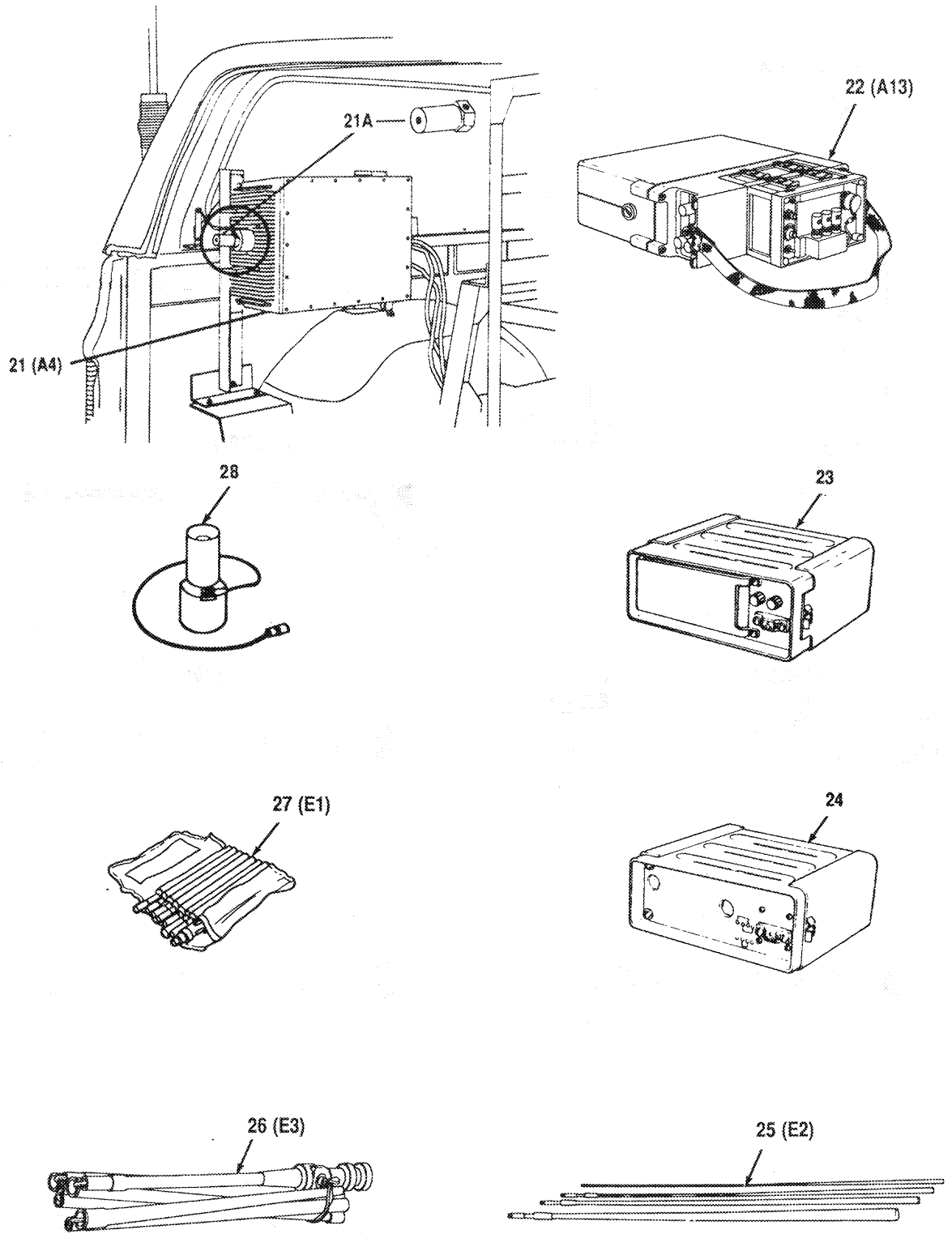
CEOMU-001

Figure 1. Radio Set AN/GRC-215 (A3023743) (Sheet 1 of 6)



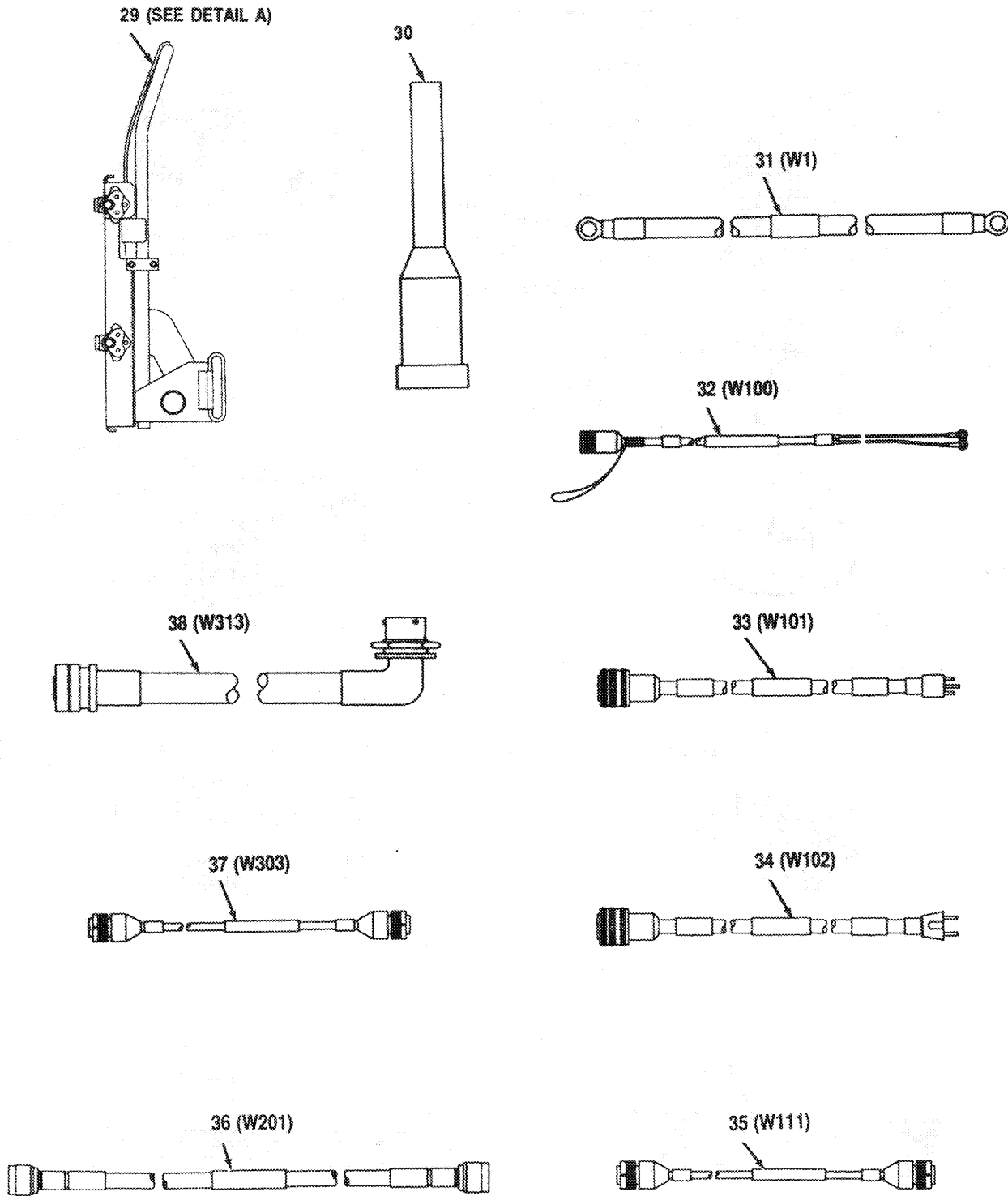
CEOMU-002

Figure 1. Radio Set AN/GRC-215 (A3023743) (Sheet 2 of 6)



CEOMU-003

Figure 1. Radio Set AN/GRC-215 (A3023743) (Sheet 3 of 6)



CEOMU-004

Figure 1. Radio Set AN/GRC-215 (A3023743) (Sheet 4 of 6)

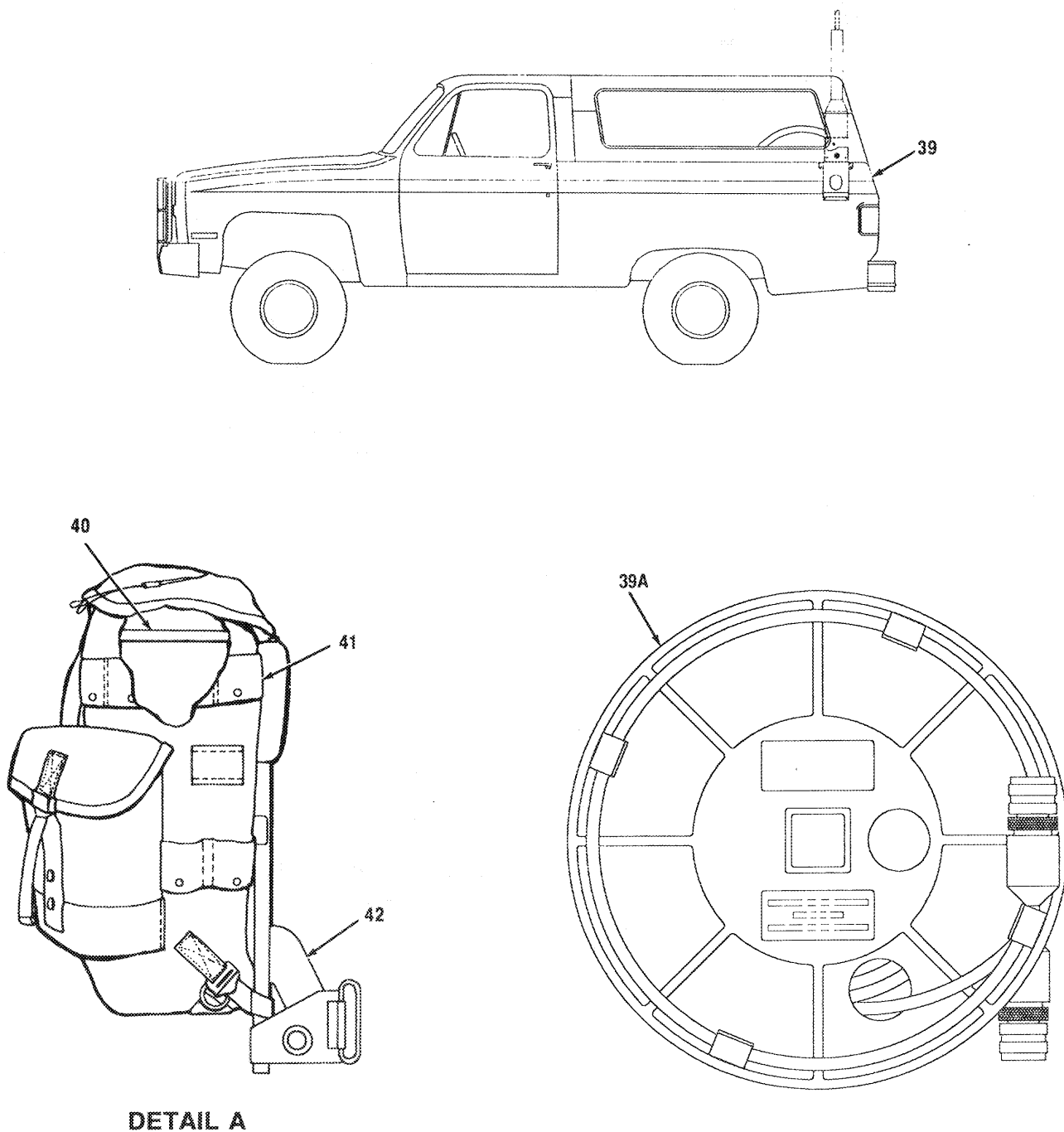


Figure 1. Radio Set AN/GRC-215 (A3023743) (Sheet 5 of 6)

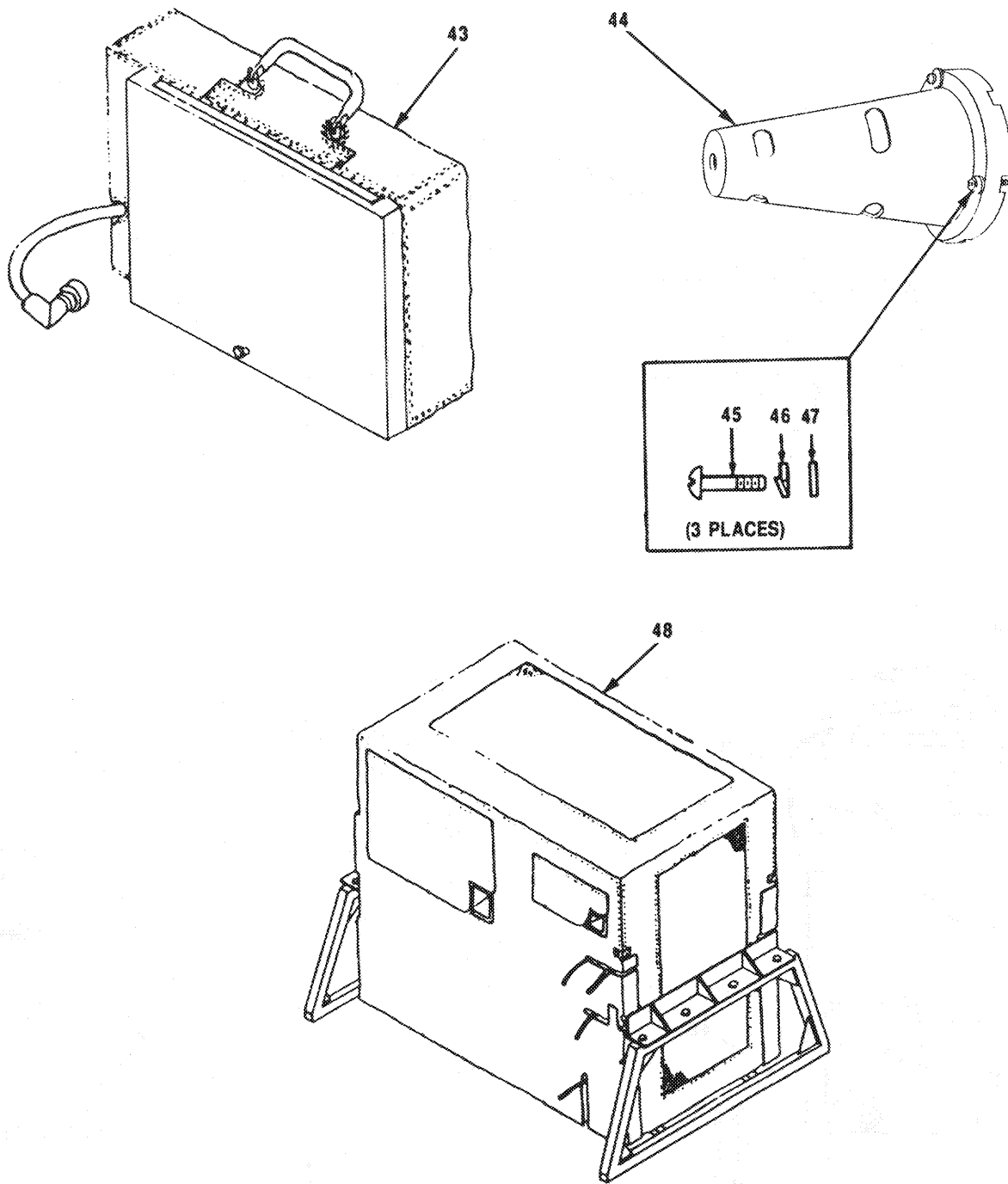


Figure 1. Radio Set AN/GRC-215 (A3023743) (Sheet 6 of 6)

SECTION II TM11-5895-1220-20P (5) (6)
 (1) (2) (3) (4) (5) (6)
 ITEM SMR CAGEC PART DESCRIPTION AND USABLE ON CODES(UOC) QTY
 NO CODE CAGEC NUMBER

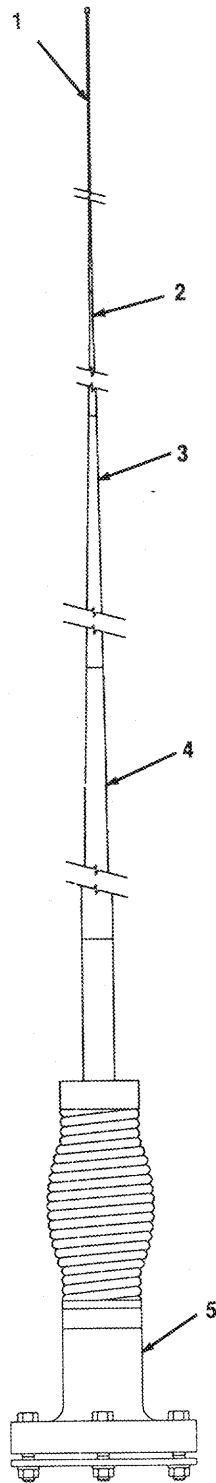
GROUP 00 RADIO SET AN/GRC-215
 (A3023743)

FIG. 1

2	PDOLD	80058	RT-1511/GRC-215	RECEIVER-TRANSMITTE (SEE TM11-5895-1318-24P FOR PARTS BREAKDOWN).....	1
3	PDOLD	80058	MT-6452/GRC-215	MOUNTING BASE,ELECT (SEE TM11-5895-1321-24P FOR PARTS BREAKDOWN).....	1
4	PDOHD	80058	AM7301/GRC-215	AMPLIFIER-POWER SUP (SEE TM11-5895-1319-24P FOR PARTS BREAKDOWN).....	1
5	PAOLD	80058	PP-8170/GRC-215	POWER SUPPLY (SEE TM11-5895-1320-24P FOR PARTS BREAKDOWN).....	1
6	PAOLD	80058	0-1836/G	TIME STANDARD RFO (SEE TM11-5895-1312-24P FOR PARTS BREAKDOWN).....	1
7	PAOLD	80058	MD-1204/G	MODEM (SEE TM11-5895-1307-24P FOR PARTS BREAKDOWN).....	1
8	PAOLD	80058	MX-10819/GRC-215	CONTROLLER ASSEMBLY (SEE TM11-5895-1322-24P FOR PARTS BREAKDOWN).....	1
10	PAOZA	80058	BB-590/U	BATTERY,STORAGE.....	2
11	PAOHH	80063	A3023798	BATTERY CASE,CHARGE (SEE FIG. 3 FOR PARTS BREAKDOWN).....	1
17	PAOZZ	80058	H-356/G	HANDSET.....	1
18	PAODD	98230	0N278636	TSEC/KG-84A (SEE TM11-5810-308-12&P FOR PARTS BREAKDOWN).....	1
19	PAOZZ	81349	H-251A/U	HEADSET,ELECTRICAL.....	1
20	PAODD	98230	0N500902	TSEC/KY-65A (SEE TM11-5810-280-13&P FOR PARTS BREAKDOWN).....	1
21	PAOLD	80058	CU-2351/GRC-215	COUPLER,ANTENNA (SEE TM11-5895-378-24P FOR PARTS BREAKDOWN).....	1
22	PAOLD	80058	CV-3968/GRC-215	CONVERTER (SEE TM11-5895-1309 24P FOR PARTS BREAKDOWN).....	1
23	PAODD	98230	ZAGL	Z-AKG BATTERY PACK (SEE TM11-5810-280-13&P FOR PARTS BREAKDOWN).....	1
24	PAODD	98230	0N501400	Z-AKE AC/DC PWR SUP (SEE TM11-5810-280-13&P FOR PARTS BREAKDOWN).....	1
25	PA000	80058	AS3809/G	CIIC(E).....	1
26	PAOZZ	80058	AS-3805/GRC-215	ANTENNA ASSEMBLY HF (SEE FIG. 2 FOR PARTS BREAKDOWN).....	1
27	PA000	80058	AS2259GR	ANTENNA,WHIP MANPAC.....	1
28	PAOZZ	80058	MX9313GR	ANTENNA (SEE TM11-5985-379-14 FOR PARTS BREAKDOWN).....	1
29	PAOHH	80063	A3023804	ADAPTER,ANTENNA TO.....	1
32	PAOHH	80063	A3023949	HARNESS,ELECTRICAL.....	1
39A	PA000	80058	CG-3883/G	CABLE ASSEMBLY,POWE.....	1
43	XBOZZ	80063	A3034177	CABLE ASSEMBLY AND (SEE FIG. 17A FOR PARTS BREAKDOWN).....	1
44	XBOZZ	80063	A3172948	COVER,BLACKOUT (FOR REMOTE I/O CONTROLLER).....	1
45	PAOZZ	96906	MS51896-11B	CAP,ELECTRICAL.....	3
46	PAOZZ	96906	MS35338-3B	SCREW,PAN HEAD.....	3
				WASHER,LOCK.....	3

SECTION II			TM11-5895-1220-20P		(5)	(6)
(1)	(2)	(3)	(4)			
ITEM NO	SMR CODE	CAGEC	PART NUMBER	DESCRIPTION AND USABLE ON CODES(UOC)		QTY
47	PADZZ	96906	MS27183-43	WASHER, FLAT.....		3
48	XBDZZ	80063	A3086812	COVER, BLACKOUT.....		1

END OF FIGURE



CEOMJ-006

Figure 2. Antenna Assembly AS-3809/G, E2, (A3034093)

SECTION II
 (1) (2) (3)
 ITEM SMR
 NO CODE CAGEC

TM11-5895-1220-20P
 (4)
 PART
 NUMBER

(5) (6)

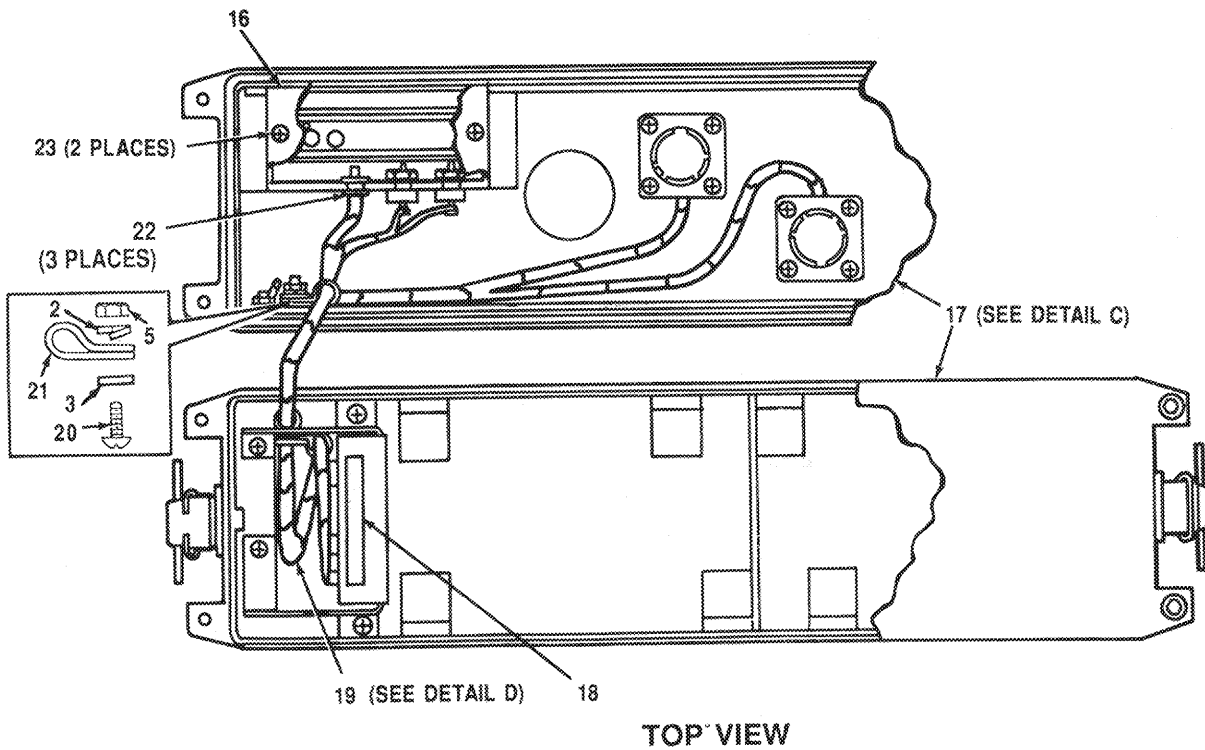
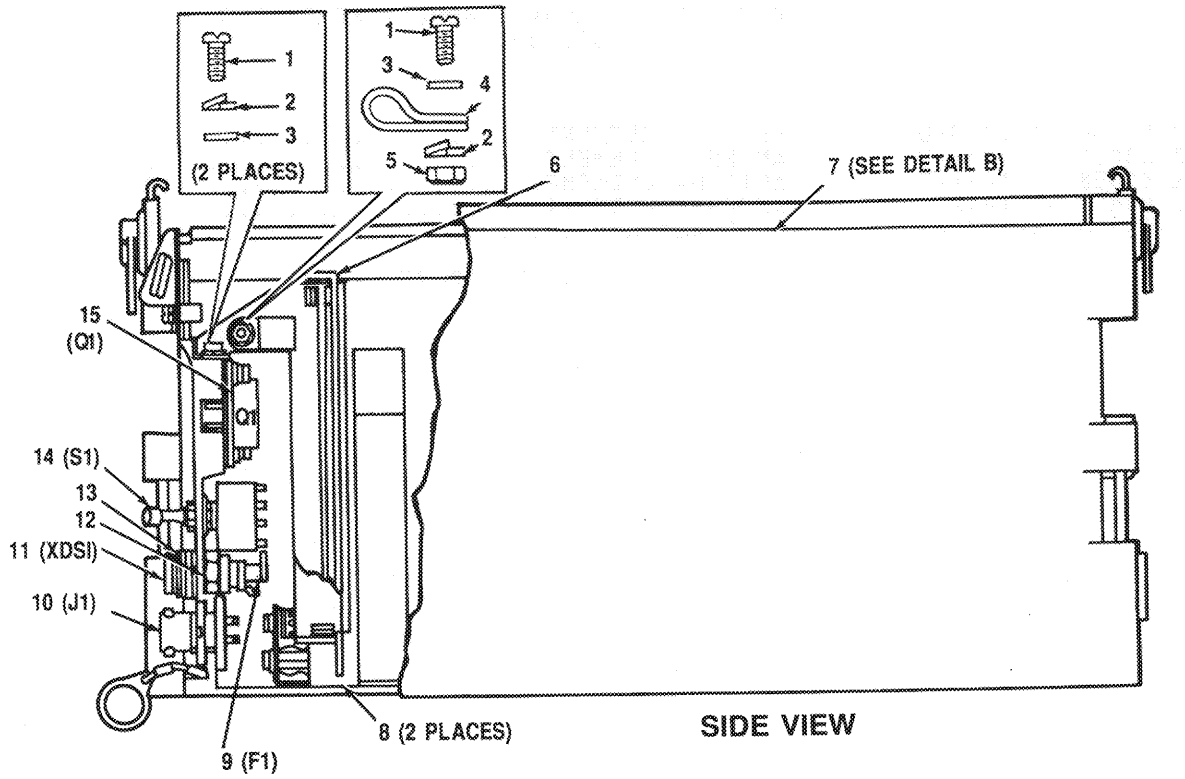
DESCRIPTION AND USABLE ON CODES(UOC) QTY

GROUP 01 ANTENNA ASSEMBLY AS-3809/G
 (A3034093)

FIG. 2

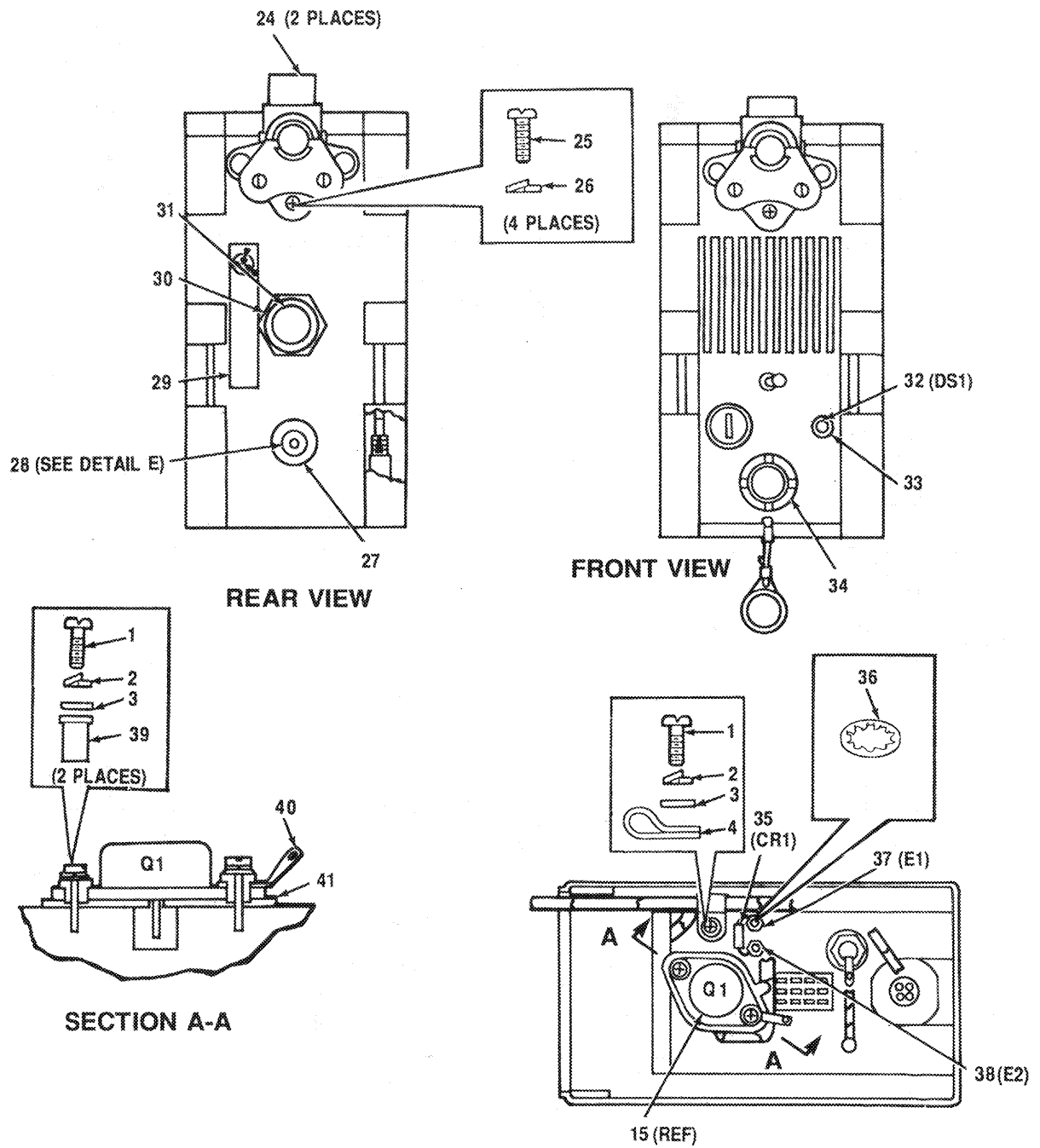
1	PAZZ	80058	AT-1039/U	ANTENNA ELEMENT.....	1
2	PAZZ	80058	AT-1040/U	ANTENNA ELEMENT.....	1
3	PAZZ	80058	AT-1041/U	ANTENNA ELEMENT.....	1
4	PAZZ	80058	AT-1042/U	ANTENNA ELEMENT.....	1
5	PAZZ	80058	AB-1335/G	BASE, ANTENNA.....	1

END OF FIGURE



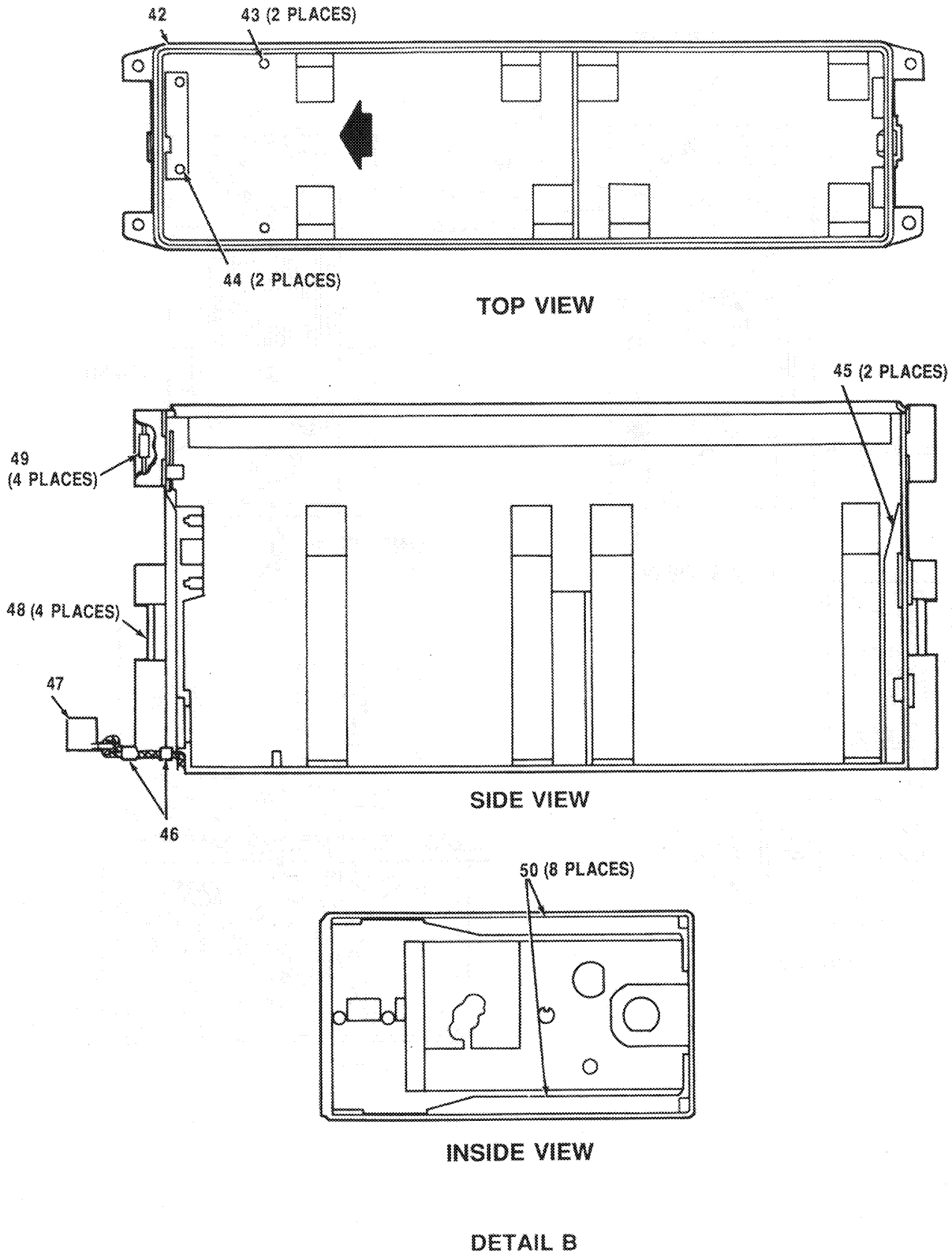
CEOMU-007

Figure 3. Battery Case/Charger (A3023798) (Sheet 1 of 5)



CEOMU-008

Figure 3. Battery Case/Charger (A3023798) (Sheet 2 of 5)



CEOMU-009

Figure 3. Battery Case/Charger (A3023798) (Sheet 3 of 5)

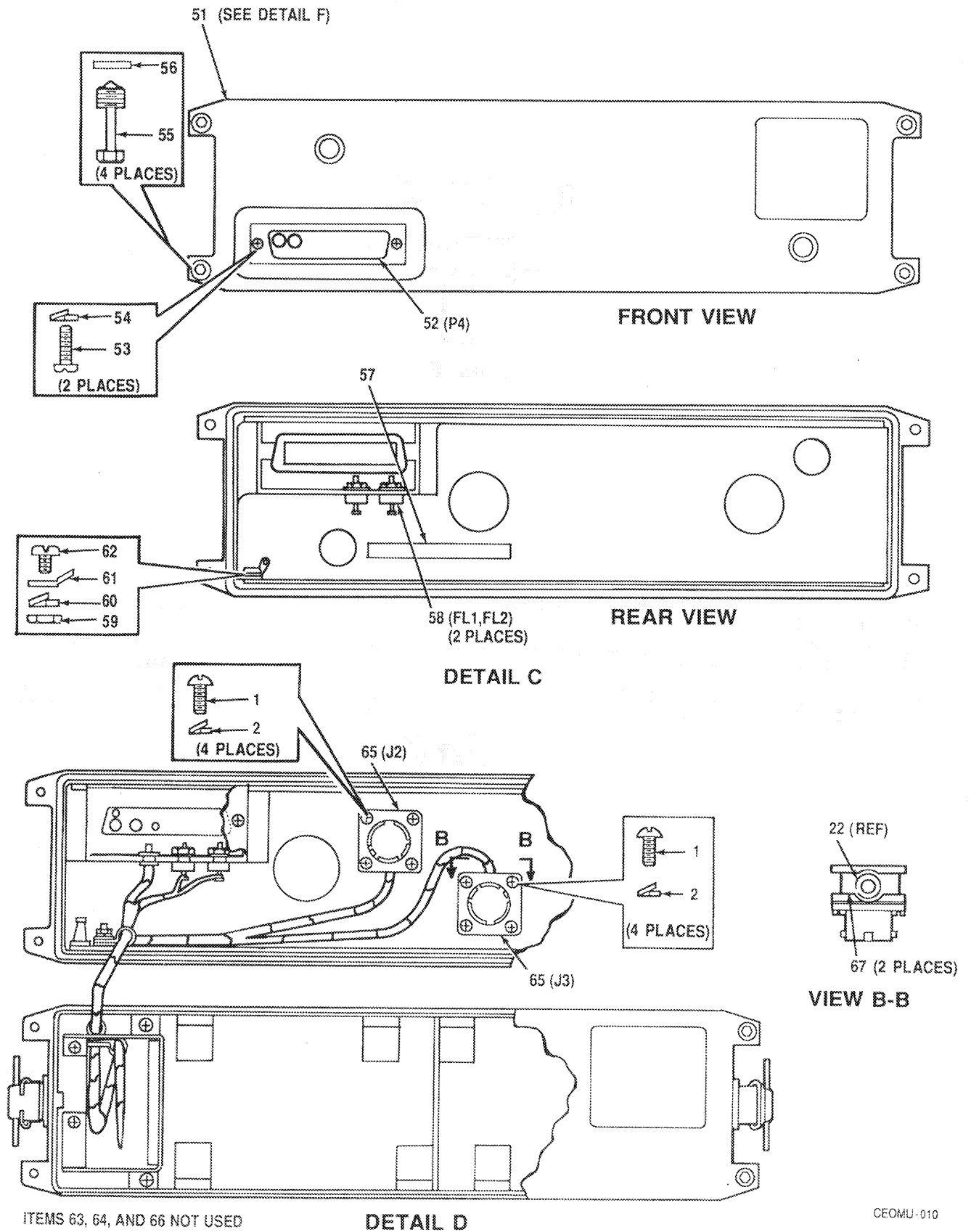
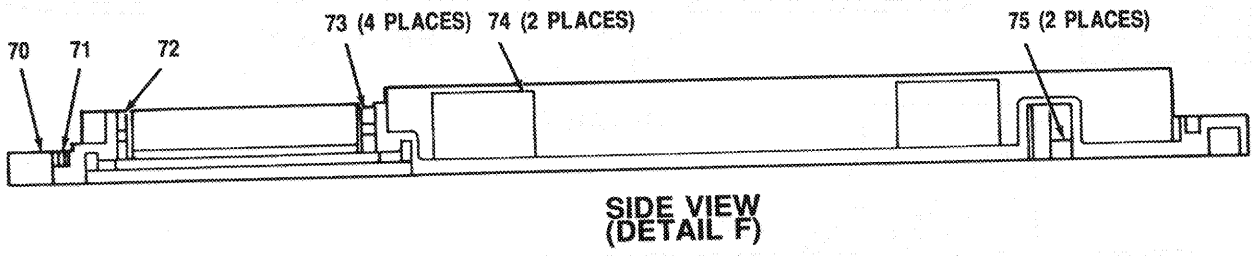
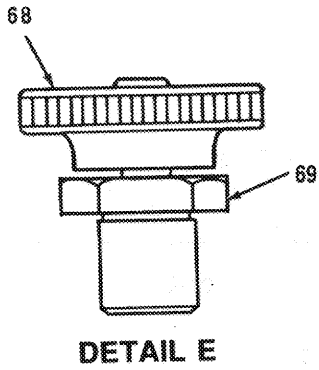


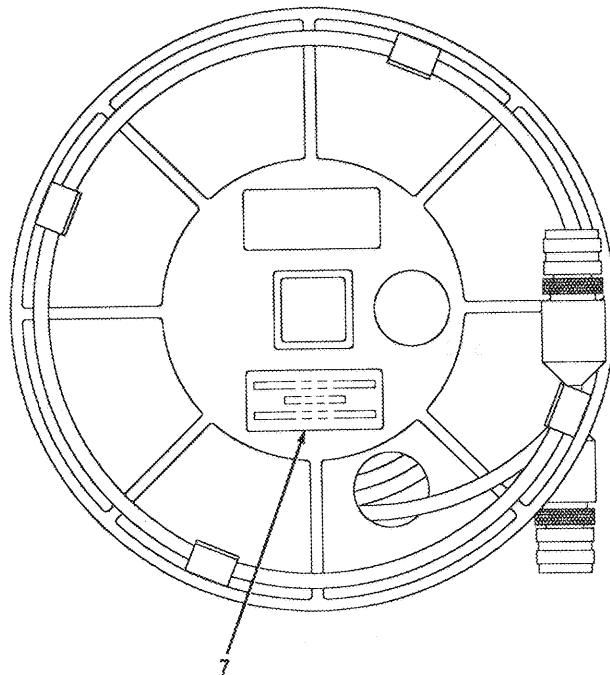
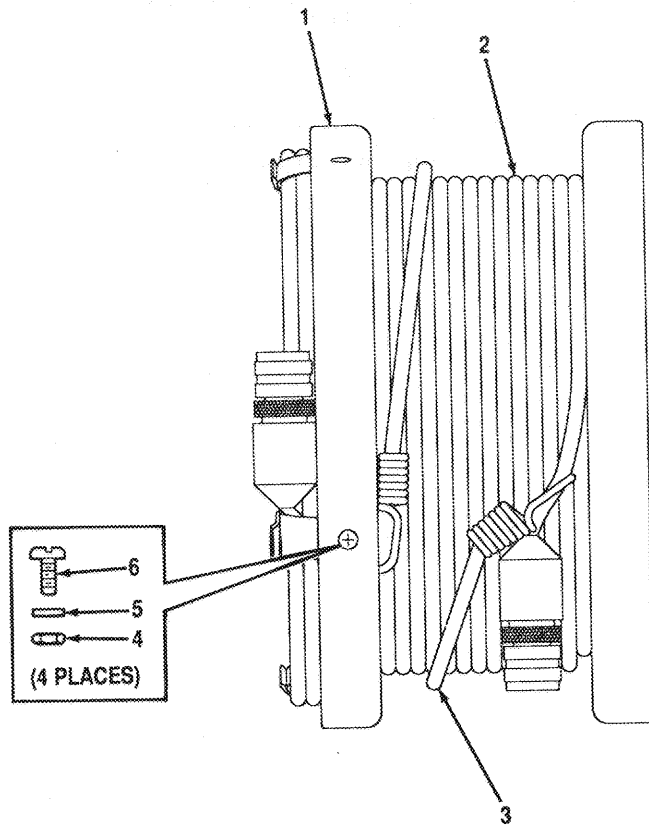
Figure 3. Battery Case/Charger (A3023798) (Sheet 4 of 5)



CEOMU-011

Figure 3. Battery Case/Charger (A3023798) (Sheet 5 of 5)

SECTION II			TM11-5895-1220-20P		
(1)	(2)	(3)	(4)	(5)	(6)
ITEM	SMR	CAGEC	PART	DESCRIPTION AND USABLE ON CODES(UDC)	QTY
NO	CODE		NUMBER		
				GROUP 05 BATTERY CASE/CHARGER (A3023798)	
				FIG. 3	
9	PAOZZ 61935	FST(.02-20A)		CARTRIDGE, FUSE.....	1
				END OF FIGURE	



CEOMU-012

Figure 17A. Cable Assembly and Reel, CG-3883/G (A3034219)

SECTION II			TM11-5895-1220-20P		
(1)	(2)	(3)	(4)	(5)	(6)
ITEM	SMR		PART		
NO	CODE	CAGEC	NUMBER	DESCRIPTION AND USABLE ON CODES(UOC)	QTY

GROUP 21 CABLE ASSEMBLY AND REEL,
CG-3883/G (A3034219)

FIG. 17A

1	PAZZ	80063	A3034262	REEL, CABLE.....	1
2	PAZZ	80063	A3034218	CABLE ASSEMBLY, SIGN.....	1
3	PAZZ	80063	A3034508-1	CORD ASSEMBLY, SHOCK.....	1
4	PAZZ	96906	MS21044C08	NUT, SELF-LOCKING.....	4
5	PAZZ	96906	MS15795-841	WASHER, FLAT.....	4
6	PAZZ	96906	MS24693C53	SCREW, MACHINE.....	4
7	PAZZ	80063	A3078289	PLATE, IDENTIFICATIO.....	1

END OF FIGURE

CROSS-REFERENCE INDEXES

STOCK NUMBER	NATIONAL STOCK NUMBER INDEX		FIG.	ITEM
	FIG.	ITEM		
5305-00-088-9670	17A	6		
5985-00-106-6130	1	27		
5985-00-172-6518	1	28		
5310-00-225-5328	17A	5		
5985-00-733-6042	2	1		
5985-00-733-6043	2	2		
5985-00-733-6044	2	3		
5985-00-733-6045	2	4		
5310-00-982-6814	17A	4		
6140-01-063-3918	1	10		
5810-01-146-3260	1	18		
5965-01-182-3384	1	19		
5895-01-205-0643	1	6		
5895-01-205-0645	1	22		
5895-01-205-0655	1	8		
5985-01-205-0878	1	21		
5895-01-205-0884	1	4		
5895-01-205-6180	1	2		
5985-01-207-8989	1	26		
5975-01-207-8991	1	3		
5995-01-207-9086	1	32		
5895-01-210-5235	1	7		
6130-01-212-3264	1	11		
5965-01-233-8607	1	17		
5985-01-263-9901	1	25		
5999-01-278-5202	1	29		
5995-01-326-0142	1	39A		
5305-01-350-6862	1	45		

CROSS-REFERENCE INDEXES

CAGEC	PART NUMBER	PART NUMBER INDEX STOCK NUMBER	FIG.	ITEM
80058	AB-1335/G	5985-01-267-2752	2	5
80058	AM7301/GRC-215	5895-01-205-0884	1	4
80058	AS-3805/GRC-215	5985-01-207-8989	1	26
80058	AS2259GR	5985-00-106-6130	1	27
80058	AS3809/G	5985-01-263-9901	1	25
80058	AT-1039/U	5985-00-733-6042	2	1
80058	AT-1040/U	5985-00-733-6043	2	2
80058	AT-1041/U	5985-00-733-6044	2	3
80058	AT-1042/U	5985-00-733-6045	2	4
80063	A3023798	6130-01-212-3264	1	11
80063	A3023804	5999-01-278-5202	1	29
80063	A3023949	5995-01-207-9086	1	32
80063	A3034177		1	43
80063	A3034218		17A	2
80063	A3034262		17A	1
80063	A3034508-1		17A	3
80063	A3078289		17A	7
80063	A3086812		1	48
80063	A3172948		1	44
80058	BB-590/U	6140-01-063-3918	1	10
80058	CG-3883/G	5995-01-326-0142	1	39A
80058	CU-2351/GRC-215	5985-01-205-0878	1	21
80058	CV-3968/GRC-215	5895-01-205-0645	1	22
61935	FST(.02-20A)		3	9
81349	H-251A/U	5965-01-182-3384	1	19
80058	H-356/G	5965-01-233-8607	1	17
80058	MD-1204/G	5895-01-210-5235	1	7
96906	MS15795-841	5310-00-225-5328	17A	5
96906	MS21044C08	5310-00-982-6814	17A	4
96906	MS24693C53	5305-00-088-9670	17A	6
96906	MS27183-43		1	47
96906	MS35338-3B		1	46
96906	MS51896-11B	5305-01-350-6862	1	45
80058	MT-6452/GRC-215	5975-01-207-8991	1	3
80058	MX-10819/GRC-215	5895-01-205-0655	1	8
80058	MX9313GR	5985-00-172-6518	1	28
80058	PP-8170/GRC-215		1	5
80058	RT-1511/GRC-215	5895-01-205-6180	1	2
98230	ZAGL		1	23
80058	0-1836/G	5895-01-205-0643	1	6
98230	0N278636	5810-01-146-3260	1	18
98230	0N500902		1	20
98230	0N501400		1	24

CROSS-REFERENCE INDEXES

FIG.	ITEM	FIGURE AND ITEM NUMBER INDEX STOCK NUMBER	CAGEC	PART NUMBER
1	2	5895-01-205-6180	80058	RT-1511/GRC-215
1	3	5975-01-207-8991	80058	MT-6452/GRC-215
1	4	5895-01-205-0884	80058	AM7301/GRC-215
1	5		80058	PP-8170/GRC-215
1	6	5895-01-205-0643	80058	O-1836/G
1	7	5895-01-210-5235	80058	MD-1204/G
1	8	5895-01-205-0655	80058	MX-10819/GRC-215
1	10	6140-01-063-3918	80058	BB-590/U
1	11	6130-01-212-3264	80063	A3023798
1	17	5965-01-233-8607	80058	H-356/G
1	18	5810-01-146-3260	98230	ON278636
1	19	5965-01-182-3384	81349	H-251A/U
1	20		98230	ON500902
1	21	5985-01-205-0878	80058	CU-2351/GRC-215
1	22	5895-01-205-0645	80058	CV-3968/GRC-215
1	23		98230	ZAGL
1	24		98230	ON501400
1	25	5985-01-263-9901	80058	AS3809/G
1	26	5985-01-207-8989	80058	AS-3805/GRC-215
1	27	5985-00-106-6130	80058	AS2259GR
1	28	5985-00-172-6518	80058	MX9313GR
1	29	5999-01-278-5202	80063	A3023804
1	32	5995-01-207-9086	80063	A3023949
1	39A	5995-01-326-0142	80058	CG-3883/G
1	43		80063	A3034177
1	44		80063	A3172948
1	45	5305-01-350-6862	96906	MS51896-11B
1	46		96906	MS35338-3B
1	47		96906	MS27183-43
1	48		80063	A3086812
2	1	5985-00-733-6042	80058	AT-1039/U
2	2	5985-00-733-6043	80058	AT-1040/U
2	3	5985-00-733-6044	80058	AT-1041/U
2	4	5985-00-733-6045	80058	AT-1042/U
2	5	5985-01-267-2752	80058	AB-1335/G
3	9		61935	FST(.02-20A)
17A	1		80063	A3034262
17A	2		80063	A3034218
17A	3		80063	A3034508-1
17A	4	5310-00-982-6814	96906	MS21044C08
17A	5	5310-00-225-5328	96906	MS15795-841
17A	6	5305-00-088-9670	96906	MS24693C53
17A	7		80063	A3078289

RECOMMENDED CHANGES TO EQUIPMENT TECHNICAL PUBLICATIONS

SOMETHING WRONG WITH THIS PUBLICATION?



THEN... JOT DOWN THE DOPE ABOUT IT ON THIS FORM, CAREFULLY TEAR IT OUT, FOLD IT AND DROP IT IN THE MAIL!

FROM: (PRINT YOUR UNIT'S COMPLETE ADDRESS)
 Commander
 Stateside Army Depot
 ATTN: AMSTA-US
 Stateside, N.J. 07703-5007

DATE SENT
 10 July 1975

PUBLICATION NUMBER
 TM 11-5840-340-20P

PUBLICATION DATE
 23 Jan 78

PUBLICATION TITLE
 Radar Set AN/PRC-76

BE EXACT... PIN-POINT WHERE IT IS

PAGE NO	PARA-GRAPH	FIGURE NO	TABLE NO
33			
44		19	
45			

IN THIS SPACE TELL WHAT IS WRONG AND WHAT SHOULD BE DONE ABOUT IT:

For item 2, change the NSN to read: 5835-00-134-9186.
 Reason: Accuracy.

Identify the cover on the junction box (item no. 5).
 Reason: It is a separate item and is not called out on figure 19.

Add the cover of the junction box as an item in the listing for figure 19.
 Reason: Same as above

SAMPLE

PRINTED NAME, GRADE OR TITLE, AND TELEPHONE NUMBER
 SSG I. M. DeSpirit of 999-1776

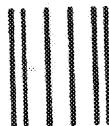
SIGN HERE

TEAR ALONG PERFORATED LINE

FILL IN YOUR
UNIT'S ADDRESS

FOLD BACK

DEPARTMENT OF THE ARMY



OFFICIAL BUSINESS

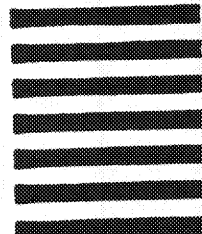
BUSINESS REPLY MAIL

FIRST CLASS MAIL PERMIT NO. 144 RED BANK, NJ

POSTAGE WILL BE PAID BY

Commander
US Army Communications-Electronics Command
and Fort Monmouth
ATTN: AMSEL-LC-LM-LT
Fort Monmouth, New Jersey 07703-9988

NO POSTAGE
NECESSARY
IF MAILED
IN THE
UNITED STATES



TEAR ALONG PERFORATED LINE

SAMPLE



FOLD BACK

RECOMMENDED CHANGES TO EQUIPMENT TECHNICAL PUBLICATIONS



THEN...JOT DOWN THE DOPE ABOUT IT ON THIS FORM. CAREFULLY TEAR IT OUT. FOLD IT AND DROP IT IN THE MAIL.

SOMETHING WRONG WITH THIS PUBLICATION?

FROM: (PRINT YOUR UNIT'S COMPLETE ADDRESS)

DATE SENT

PUBLICATION NUMBER

PUBLICATION DATE

PUBLICATION TITLE

BE EXACT PIN-POINT WHERE IT IS

PAGE NO.	PARA-GRAPH	FIGURE NO.	TABLE NO.
----------	------------	------------	-----------

IN THIS SPACE TELL WHAT IS WRONG AND WHAT SHOULD BE DONE ABOUT IT:

TEAR ALONG PERFORATED LINE

PRINTED NAME GRADE OR TITLE AND TELEPHONE NUMBER

SIGN HERE

DA FORM 1 JUL 79 2028-2

PREVIOUS EDITIONS ARE OBSOLETE

P.S.—IF YOUR OUTFIT WANTS TO KNOW ABOUT YOUR RECOMMENDATION MAKE A CARBON COPY OF THIS AND GIVE IT TO YOUR HEADQUARTERS

FILL IN YOUR
UNIT'S ADDRESS

FOLD BACK

DEPARTMENT OF THE ARMY



OFFICIAL BUSINESS

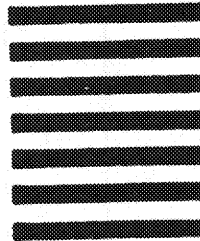
BUSINESS REPLY MAIL

FIRST CLASS MAIL PERMIT NO. 144 RED BANK NJ

POSTAGE WILL BE PAID BY

Commander
US Army Communications-Electronics Command
and Fort Monmouth
ATTN: AMSEL-LC-LM-LT
Fort Monmouth, New Jersey 07703-5007

NO POSTAGE
NECESSARY
IF MAILED
IN THE
UNITED STATES



TEAR ALONG PERFORATED LINE

FOLD BACK

RECOMMENDED CHANGES TO EQUIPMENT TECHNICAL PUBLICATIONS

SOMETHING WRONG WITH THIS PUBLICATION?



THEN...JOT DOWN THE DOPE ABOUT IT ON THIS FORM. CAREFULLY TEAR IT OUT. FOLD IT AND DROP IT IN THE MAIL.

FROM: (PRINT YOUR UNIT'S COMPLETE ADDRESS)

DATE SENT

PUBLICATION NUMBER

PUBLICATION DATE

PUBLICATION TITLE

BE EXACT PIN-POINT WHERE IT IS

PAGE NO. PARA-GRAPH FIGURE NO. TABLE NO.

IN THIS SPACE TELL WHAT IS WRONG AND WHAT SHOULD BE DONE ABOUT IT:

TEAR ALONG PERFORATED LINE

PRINTED NAME GRADE OR TITLE AND TELEPHONE NUMBER

SIGN HERE

FILL IN YOUR
UNIT'S ADDRESS

FOLD BACK

DEPARTMENT OF THE ARMY

OFFICIAL BUSINESS

BUSINESS REPLY MAIL

FIRST CLASS MAIL PERMIT NO 144 RED BANK NJ

POSTAGE WILL BE PAID BY

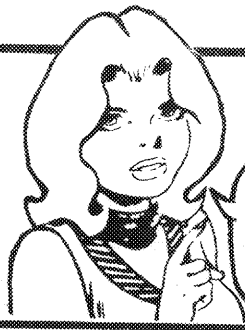
Commander
US Army Communications-Electronics Command
and Fort Monmouth
ATTN: AMSEL-LC-LM-LT
Fort Monmouth, New Jersey 07703-5007

NO POSTAGE
NECESSARY
IF MAILED
IN THE
UNITED STATES

TEAR ALONG PERFORATED LINE

FOLD BACK

RECOMMENDED CHANGES TO EQUIPMENT TECHNICAL PUBLICATIONS



THEN...JOT DOWN THE DOPE ABOUT IT ON THIS FORM. CAREFULLY TEAR IT OUT. FOLD IT AND DROP IT IN THE MAIL.

SOMETHING WRONG WITH THIS PUBLICATION?

FROM: (PRINT YOUR UNIT'S COMPLETE ADDRESS)

DATE SENT

PUBLICATION NUMBER

PUBLICATION DATE

PUBLICATION TITLE

BE EXACT PIN-POINT WHERE IT IS

PAGE NO.	PARA. GRAPH	FIGURE NO.	TABLE NO.
----------	-------------	------------	-----------

IN THIS SPACE TELL WHAT IS WRONG AND WHAT SHOULD BE DONE ABOUT IT:

TEAR ALONG PERFORATED LINE

PRINTED NAME GRADE OR TITLE AND TELEPHONE NUMBER

SIGN HERE

FILL IN YOUR
UNIT'S ADDRESS

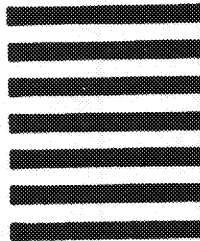
FOLD BACK

DEPARTMENT OF THE ARMY

OFFICIAL BUSINESS



NO POSTAGE
NECESSARY
IF MAILED
IN THE
UNITED STATES



BUSINESS REPLY MAIL
FIRST CLASS MAIL PERMIT NO. 144 RED BANK NJ

POSTAGE WILL BE PAID BY

Commander
US Army Communications-Electronics Command
and Fort Monmouth
ATTN: AMSEL-LC-LM-LT
Fort Monmouth, New Jersey 07703-5007

TEAR ALONG PERFORATED LINE



FOLD BACK