

SIZE	FSCM NO.	DRAWING NUMBER	PART NO. (IN)
D	054296	9945 10-00	A00
SCALE			SHEET 2 OF 2

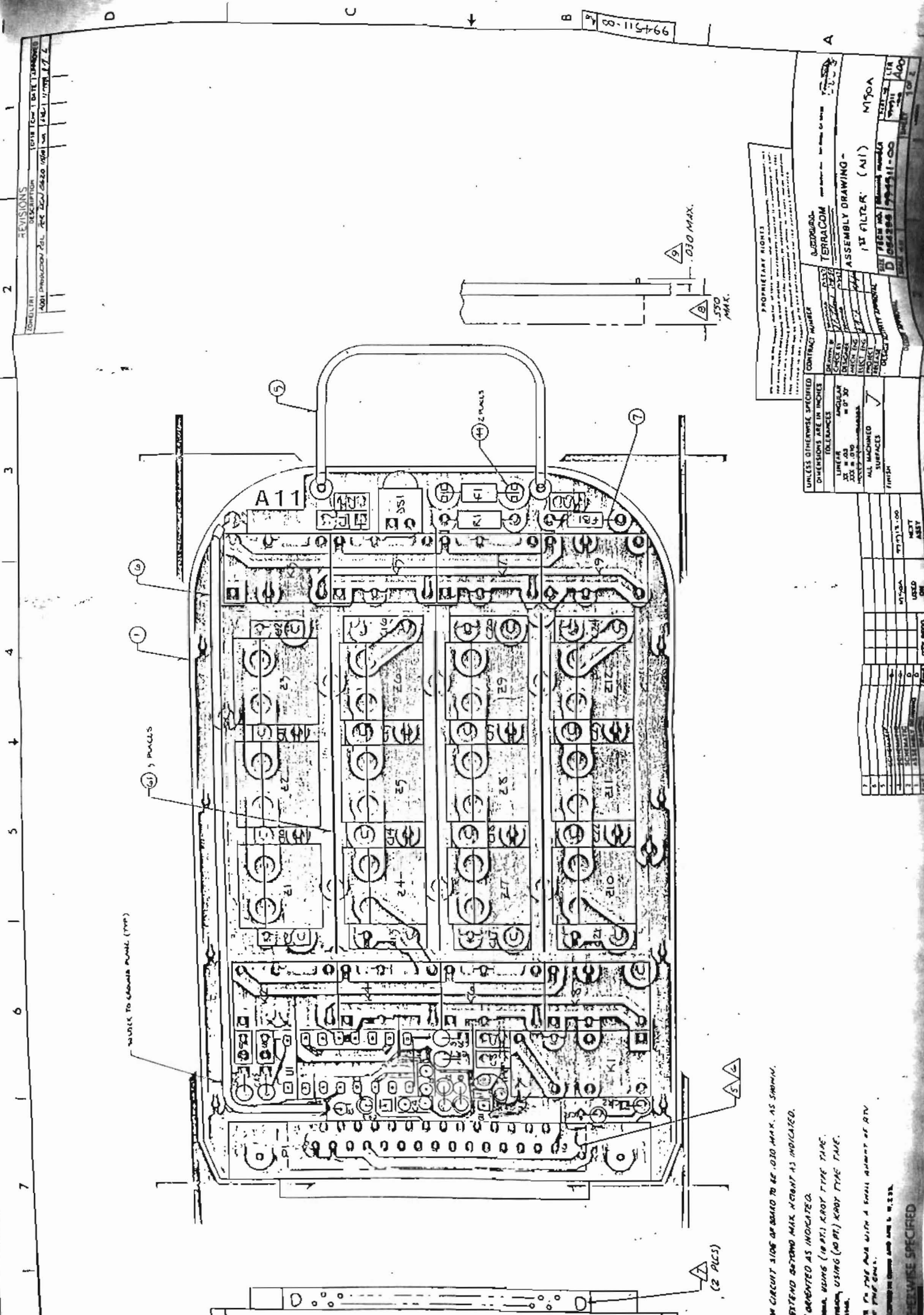
PROPRIETARY RIGHTS  
 All rights reserved. No part of this document may be reproduced, stored in a retrieval system, or transmitted in any form or by any means, electronic, mechanical, photocopying, recording, or by any information storage and retrieval system, without the prior written permission of the copyright owner. This document is the property of the copyright owner and is loaned to you for your use only. It is not to be distributed to any other person without the prior written permission of the copyright owner.

WAVELENGTHS	
554	06
575	54
584	77
51	45
42	49
41	

NOTE: UNLESS OTHERWISE SPECIFIED

117511 - 1082

994511-00 4



REVISIONS	DATE	DESCRIPTION
1	11/27/66	ISSUED FOR PRODUCTION
2	11/27/66	ISSUED FOR PRODUCTION

PROPRIETARY RIGHTS  
 THIS DRAWING IS THE PROPERTY OF TERRACOM AND IS TO BE KEPT IN CONFIDENCE. IT IS TO BE USED ONLY FOR THE PURPOSES SPECIFIED IN THE CONTRACT. IT IS TO BE DESTROYED OR REPRODUCED AT THE DISCRETION OF TERRACOM.

UNLESS OTHERWISE SPECIFIED DIMENSIONS ARE IN INCHES

TOLERANCES	FINISH
LINEAR .015" & OVER .010" & OVER .005" & OVER .002" & OVER	ALL UNFINISHED SURFACES

1	CONTRACT NO.	994511-00
2	PROJECT NO.	994511-00
3	DRAWING NO.	994511-00
4	REV.	1
5	DATE	11/27/66
6	BY	
7	CHECKED	
8	APPROVED	

ASSEMBLY DRAWING -  
 1ST FILTER (A11) M150A

UNLESS OTHERWISE SPECIFIED DIMENSIONS ARE IN INCHES

1	CONTRACT NO.	994511-00
2	PROJECT NO.	994511-00
3	DRAWING NO.	994511-00
4	REV.	1
5	DATE	11/27/66
6	BY	
7	CHECKED	
8	APPROVED	

ALL DIMENSIONS ON CIRCUIT SIDE OF BOARD TO BE .030 MAX. AS SHOWN.  
 COMPONENTS ARE TO EXTEND BEYOND MAX HEIGHT AS INDICATED.  
 SETTING PINS TO BE ORIENTED AS INDICATED.  
 SURFACE MOUNTED COMPONENTS TO BE ORIENTED AS INDICATED.  
 ALL DIMENSIONS ARE TO CENTER UNLESS OTHERWISE SPECIFIED.

THIS DRAWING IS THE PROPERTY OF TERRACOM AND IS TO BE KEPT IN CONFIDENCE. IT IS TO BE USED ONLY FOR THE PURPOSES SPECIFIED IN THE CONTRACT. IT IS TO BE DESTROYED OR REPRODUCED AT THE DISCRETION OF TERRACOM.

UNLESS OTHERWISE SPECIFIED DIMENSIONS ARE IN INCHES

1	CONTRACT NO.	994511-00
2	PROJECT NO.	994511-00
3	DRAWING NO.	994511-00
4	REV.	1
5	DATE	11/27/66
6	BY	
7	CHECKED	
8	APPROVED	

UNLESS OTHERWISE SPECIFIED DIMENSIONS ARE IN INCHES

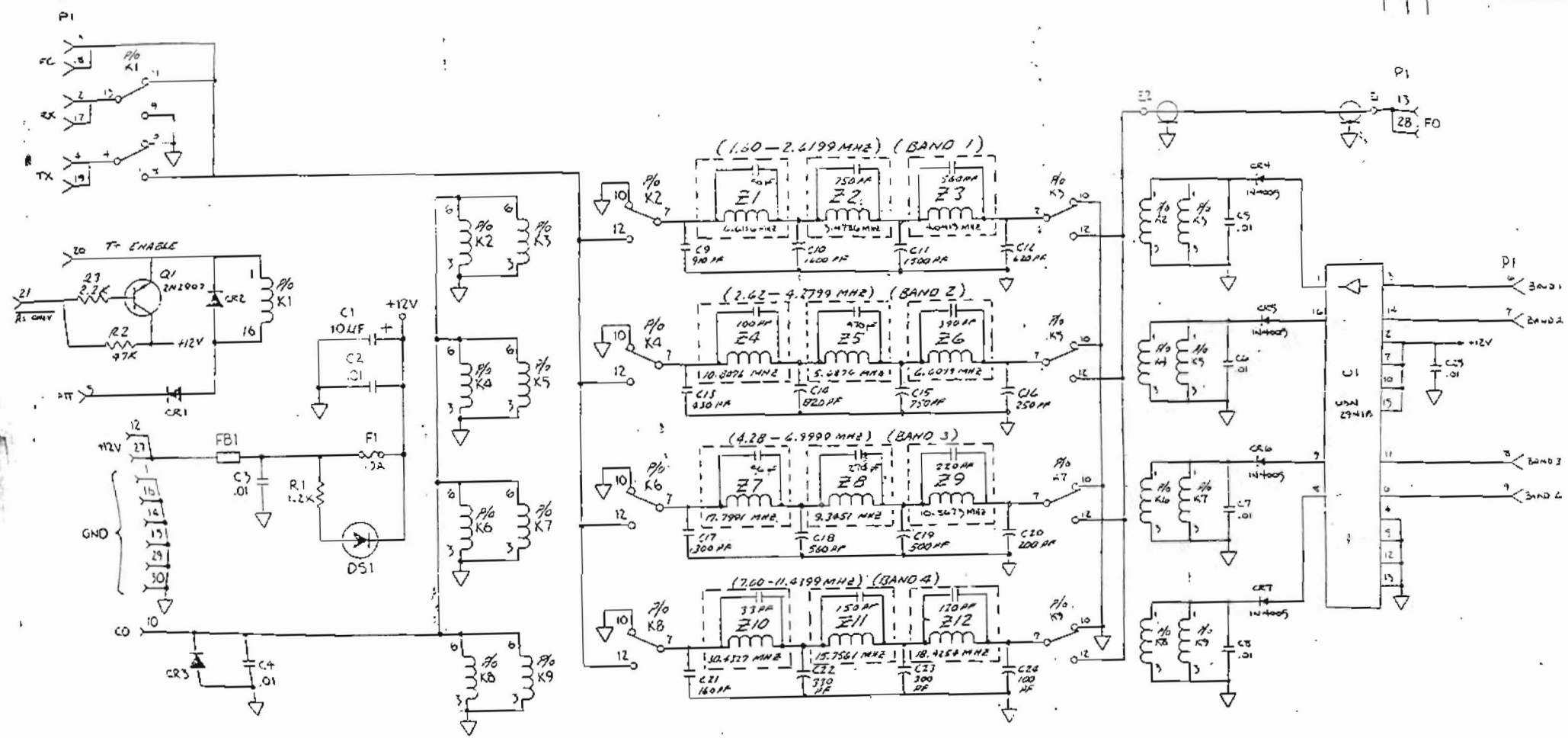
1	CONTRACT NO.	994511-00
2	PROJECT NO.	994511-00
3	DRAWING NO.	994511-00
4	REV.	1
5	DATE	11/27/66
6	BY	
7	CHECKED	
8	APPROVED	

UNLESS OTHERWISE SPECIFIED DIMENSIONS ARE IN INCHES

1	CONTRACT NO.	994511-00
2	PROJECT NO.	994511-00
3	DRAWING NO.	994511-00
4	REV.	1
5	DATE	11/27/66
6	BY	
7	CHECKED	
8	APPROVED	

UNLESS OTHERWISE SPECIFIED DIMENSIONS ARE IN INCHES

1	CONTRACT NO.	994511-00
2	PROJECT NO.	994511-00
3	DRAWING NO.	994511-00
4	REV.	1
5	DATE	11/27/66
6	BY	
7	CHECKED	
8	APPROVED	



C	R	O	CR	F	DS	Z	K	F	P	U
27	3	1	7	1	1	12	9	1	1	1

- DIODES ARE IN414B.
- CAPACITOR VALUES ARE IN MICROFARADS.
- RESISTORS ARE 1/8W, 5%; VALUES IN OHMS.

NOTE: UNLESS OTHERWISE SPECIFIED


FOR PARTS LIST SEE SEPARATE D/W NUMBER 99451100

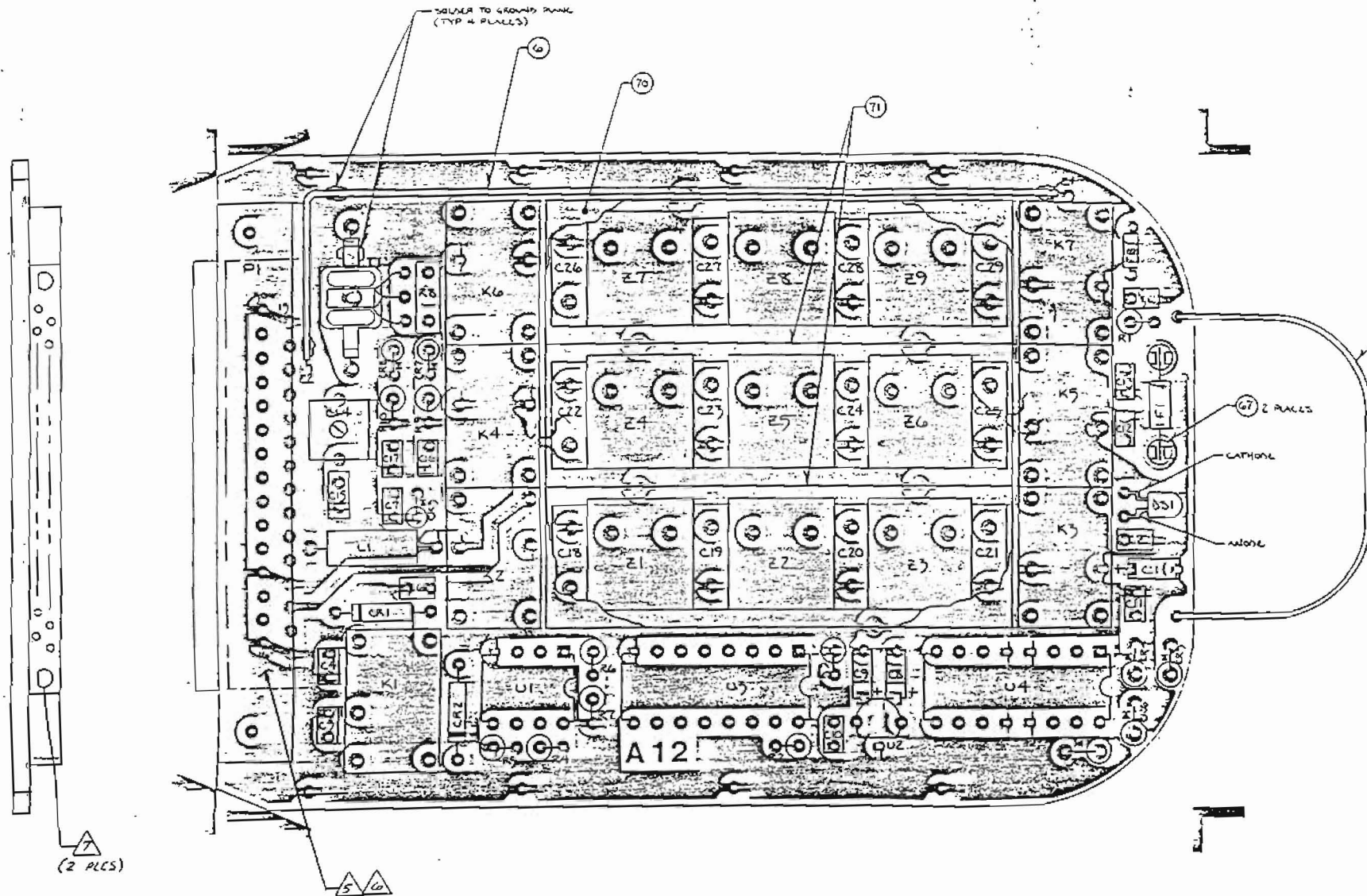
UNLESS OTHERWISE SPECIFIED DIMENSIONS ARE IN INCHES	DESIGNED BY: [Signature]		<b>SOUTHCOM INTERNATIONAL INC.</b> 2210 MEYERS AVENUE ESCONDIDO, CALIFORNIA 92025 U.S.A.
TOLERANCES	APPROVED BY: [Signature]		
1/16" ± .001" INCL. 1/8" & 3/16" ± .002" ALL DIMENSIONS UNLESS OTHERWISE SPECIFIED	RELEASED BY: [Signature]	<b>SCHEMATIC DIAGRAM, 1ST FILTER (A11)</b> MP50A	
DATE: 8/20/68	SCALE: AS SHOWN	SHEET: 1 OF 2	CODE IDENT NUMBER 52427

110-11-00 2 OF 2

994511-00 11

A

REVISIONS				
DATE	CHK	DATE	APPROVED	DESCRIPTION
11/14/61	TKS	1-6-61		ADD PRODUCTION RELEASE 201020



994512-00 SHEET 1 OF 2

994512-00

ALL LEAD EXTENSIONS ON CIRCUIT SIDE OF BOARD TO BE .030 MAX. AS SHOWN.  
 COMPONENTS NOT TO EXTEND BEYOND MAX. HEIGHT AS INDICATED.  
 WIRING PINS TO BE ORIENTED AS INDICATED.  
 IDENTIFY WITH STOCK NUMBER, USING (10 PF.) KROY TYPE TAP.  
 IDENTIFY WITH LATEST REVISION, USING (10 PF.) KROY TYPE TAP.  
 DIMENSIONS ARE - .00148.  
 SEE 21 THROUGH 29 TO THE PINS WITH A SMALL AMOUNT OF SIV  
 (ITEM 2) APPLIED UNDER THE COILS.  
 RESISTOR VALUES ARE SPECIFIED IN OHMS AND ARE 1/4 W. 5%.  
 UNLESS OTHERWISE SPECIFIED

QTY	RECD	USED	NEXT
SIZE	ON	ASSY	
7			
6			
5			
4			
3			
2			
1			
0			

UNLESS OTHERWISE SPECIFIED	
DIMENSIONS ARE IN INCHES	
TOLERANCES	
LINEAR	ANGULAR
XX = .00	= 0° 30'
XXX = .010	
MOLES PER ANGLE(S)?	
ALL MACHINED SURFACES	<input checked="" type="checkbox"/>
FINISH	

**PROPRIETARY RIGHTS**

THIS DRAWING IS THE PROPERTY OF TERRACOM AND IS NOT TO BE REPRODUCED, COPIED, OR USED IN ANY MANNER WITHOUT THE WRITTEN PERMISSION OF TERRACOM. IT IS HEREBY AGREED THAT THE REPRODUCER SHALL BE RESPONSIBLE FOR OBTAINING THE NECESSARY PERMISSIONS FROM THE ORIGINAL OWNER OF THE PATENT RIGHTS IN THE SUBJECT MATTER OF THIS DRAWING.

**TERRACOM**

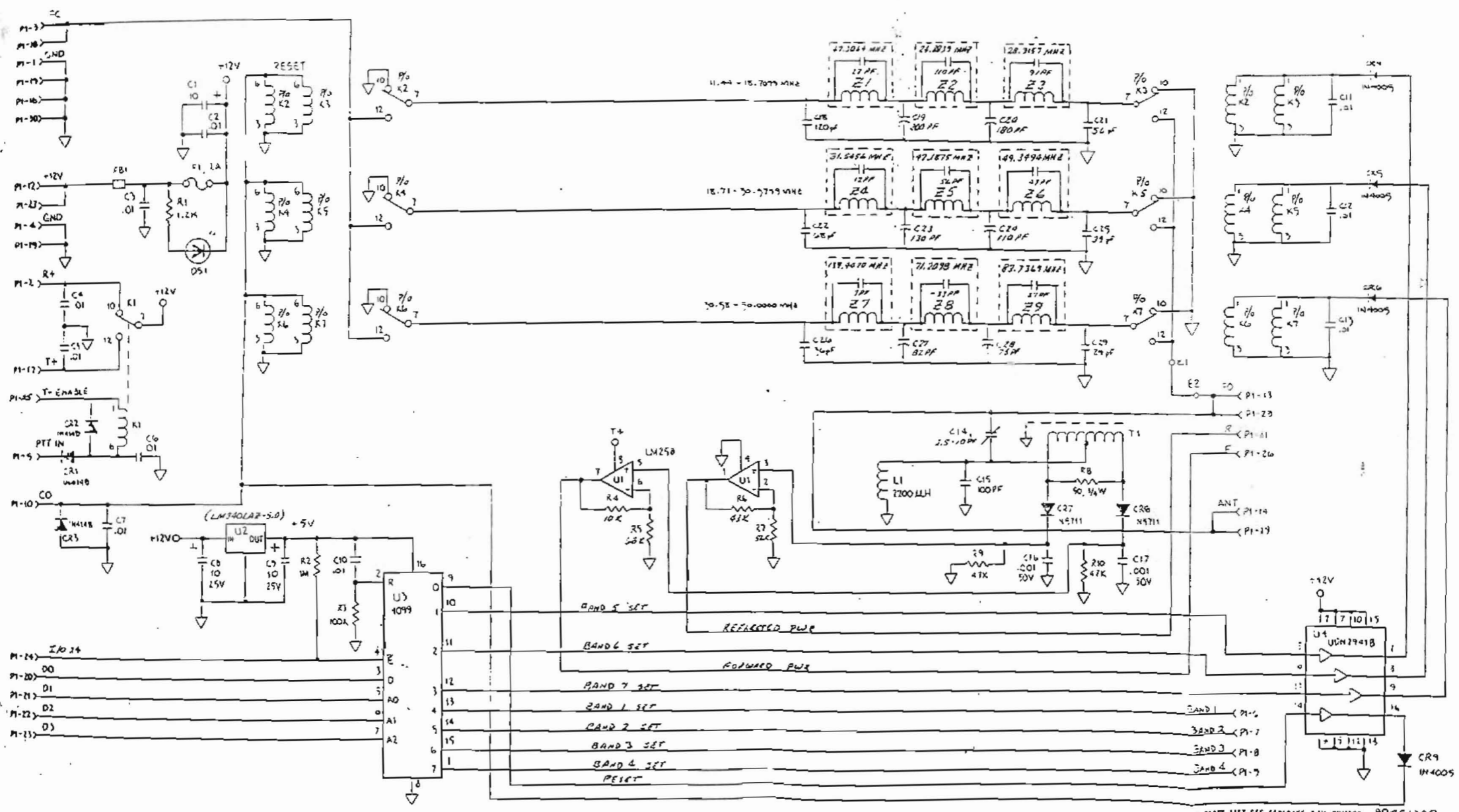
**ASSEMBLY DRAWING -**

2<sup>ND</sup> FILTER, A12 M50A

SHEET NO	D 054298	DRAWING NUMBER	994512-00
SCALE	1:1	SHEET	1 OF 2

8 7 6 5 4 3 2 1





994512-00 2 of 2

994512-00 4

CAPACITORS ARE IN MICROFARADS.  
RESISTORS ARE 1/8W, 5% ; VALUES IN OHMS.

C	R	CR	U	Z	T	L	K	F	FB	DS	P	E
29	10	9	4	9	1	1	7	1	1	1	1	2

FOR PARTS LIST SEE SEPARATE B/W NUMBER 99451200

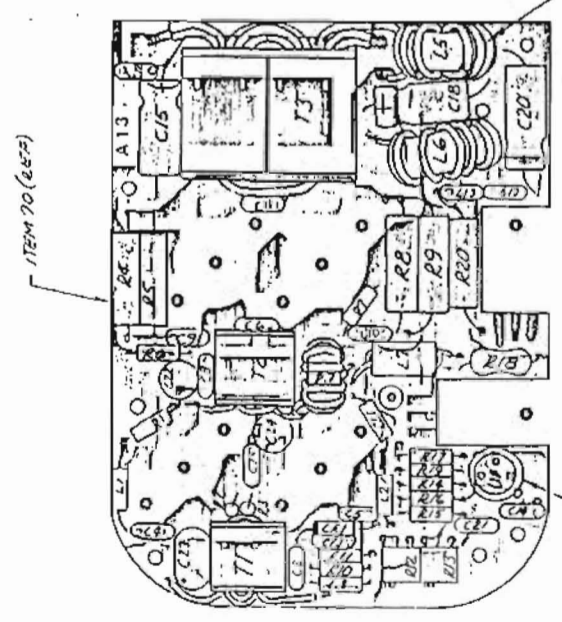
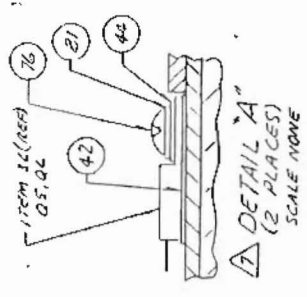
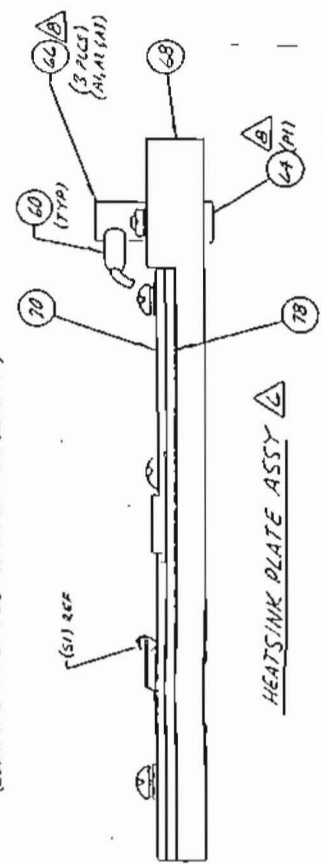
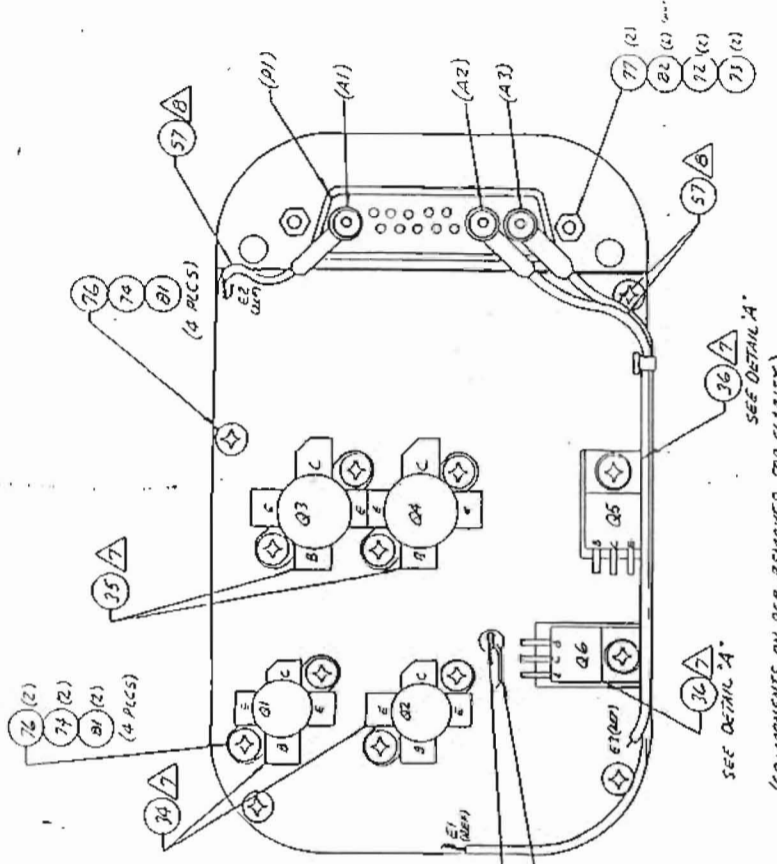
UNLESS OTHERWISE SPECIFIED	DESIGN BY	DATE		<b>SOUTHCAM INTERNATIONAL INC.</b> 2210 WELLES AVENUE ESCORCING, CALIFORNIA 92925 U.S.A.
DRAWING AND IN CHARGE	CHECKED BY	DATE		
TOLERANCES	APPROVED BY	DATE	<b>SCHEMATIC DIAGRAM, 2ND FILTER (A12)</b> M50A	
UNLESS OTHERWISE SPECIFIED	RELEASED BY	DATE		

SCALE: NONE UNIT: E or I

CODE IDENT NUMBER 52427

REV	DATE	BY	CHKD	APPD

REVISIONS	DESCRIPTION	DATE	APPROVED
1	ISSUED FOR CONSTRUCTION	12/15/66	
2	REVISIONS		



CIRCUIT BOARD ASSY. (SEE SHEET 2)

- SECURE L9, L5, F66 TO BOARD USING ITEM 89 AS AGR.
- INSTALL ITEM 69, 65, 58, 59 TO HEATSINK PLATE ASSY. AFTER STEPS 1 THRU 5 HAS BEEN COMPLETED. TERMINATE ALL WIRES TO DESIGNATED AREA SHOWN ON SH 2.
- INSTALL CONN. (P1), ITEM 60 WITH HARDWARE TO BE FOLLOWED BY INSTALLING ITEM 66 (3 PLCS) (A1-A3) WITH ITEM 57 COAX WIRES. TERMINATE COAX WIRES TO DESIGNATED AREA AS SHOWN ON SH 1.
- INSTALL ITEM 34, 81, 82, ITEM 35, 84, 85. USING SOLDER HARDWARE. INSTALL ITEM 36, 83, 86 USING DETAIL "A" ON SHEET 1.
- ASSEMBLE ITEM 68, 70 AND 78 USING PROPER HARDWARE (9 PLACES) AS SHOWN ON SHEET 1.
- INSTALL THERMOSTAT, ITEM 60, TO HEATSINK PLATE, ITEM 68, AS SHOWN ON SH. 1.
- INSTALL ALL COMPONENTS TO CIRCUIT BD. APPROX. AS SHOWN ON SHEET 1.

UNLESS OTHERWISE SPECIFIED  
DIMENSIONS ARE IN INCHES  
TOLERANCES  
LINEAR .010  
ANGULAR .030  
HOLE DIA. .015  
HOLE POSITION .015  
HOLE DRILLING .015  
HOLE REAMING .015  
HOLE TAPPING .015  
HOLE THREADING .015  
HOLE FINISH  
ALL MACHINED SURFACES  
FINISH

UNLESS OTHERWISE SPECIFIED (CONTRACT NUMBER)	CONTRACT NUMBER	994513-00
PROPRIETARY RIGHTS	TRADE MARK	
DESIGNER	TERRACOM	
CHECKED BY		
DESIGNED BY		
PROJECT NO.		
PROJECT NAME		
DESIGN APPROVAL		
TEST APPROVAL		
ASSEMBLY DRAWING -		
POWER AMPLIFIER, M50B (A13)		
SIZE: YSCM NO. DRAWING NUMBER		
D 1054286 994513-00		
SCALE: 2/1		
SHEET 1 OF 3		

ITEM	QTY	PRECED	USED	ON	NEXT	ASST
79						
80						
81						
82						
83						
84						
85						
86						
87						
88						
89						
90						
91						
92						
93						
94						
95						
96						
97						
98						
99						
100						

D

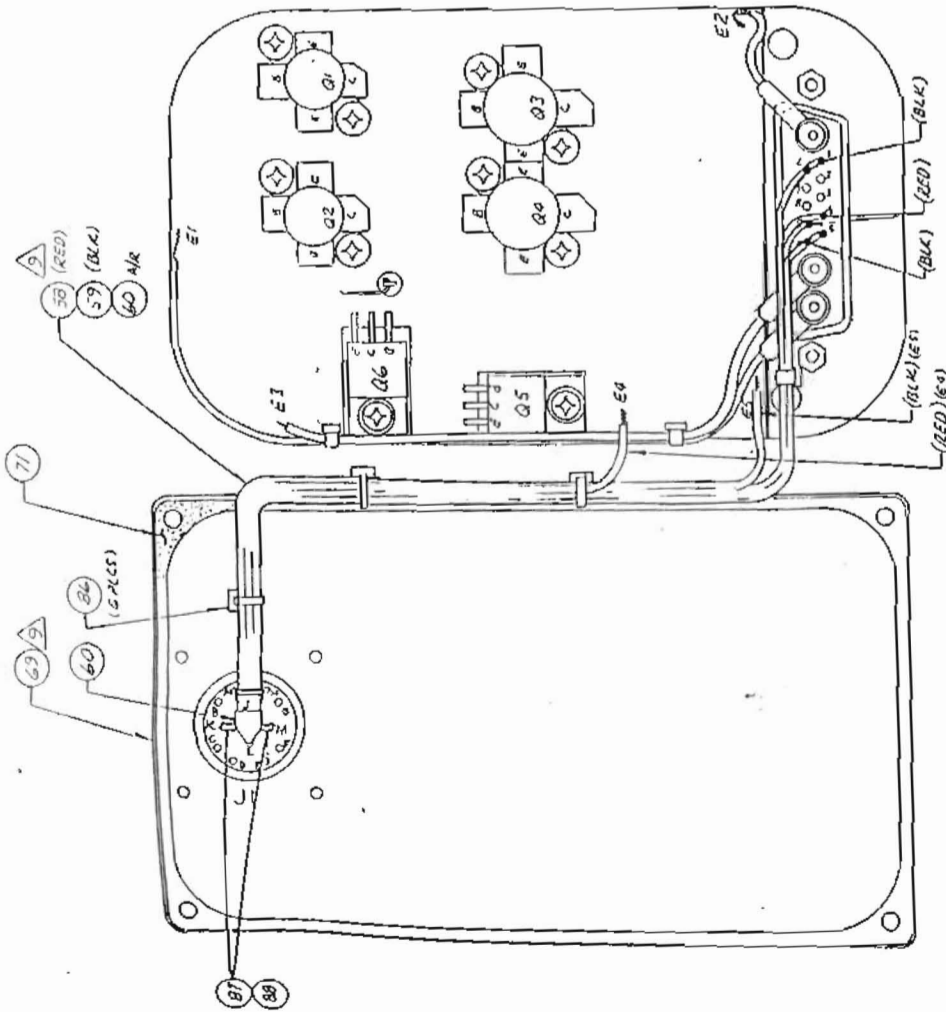
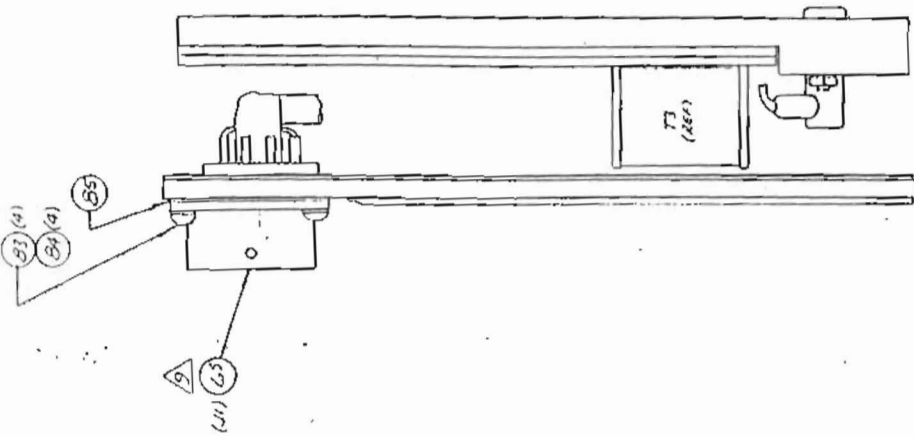
C



B

00-E15466

A



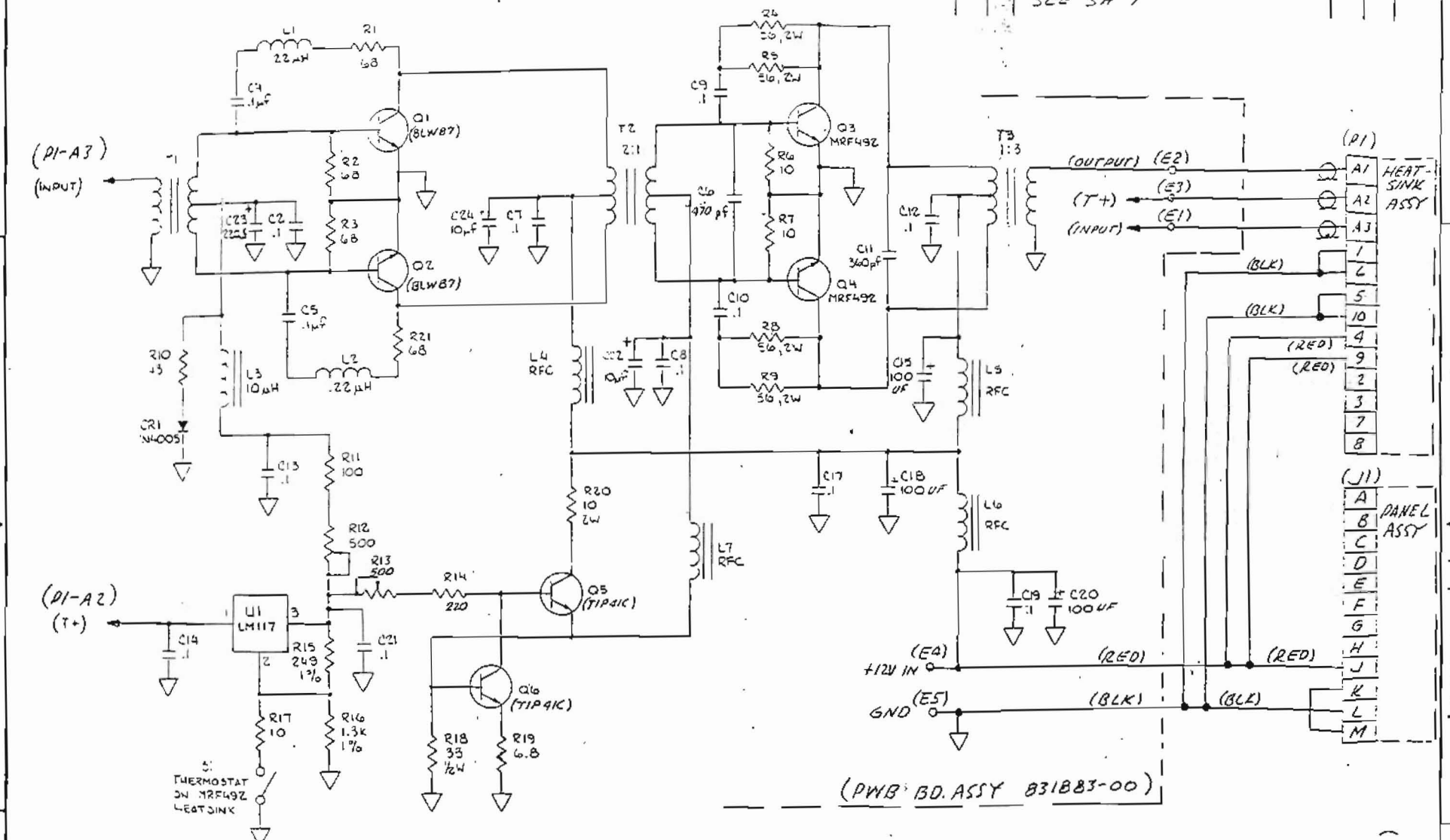
ALL COMPONENTS REMOVED ON PCB FOR CLARITY.

PROPRIETARY RIGHTS		PART NO. 118	
This drawing is the property of the United States Government and is not to be distributed outside the United States without the express written permission of the Department of Defense.		994513-00	
SHEET 2 OF 3		DRAWING NUMBER	
SCALE 2/1		994513-00	
D 054296		PART NO. 118	
SHEET 2 OF 3		DRAWING NUMBER	
994513-00		994513-00	

UNLESS OTHERWISE SPECIFIED

1 2 3 4 5 6 7 8

REVISIONS			
ZONE	REV	DESCRIPTION	DATE
		SEE SH 1	



SEE SHEET 1.  
NOTE: UNLESS OTHERWISE SPECIFIED

HIGHEST REF. DES. USED	REF. DES. NOT USED
U1, S1, Q6, T3, L7, CR1, R21, C24, E5	C1, 3, 16

FOR PARTS LIST SEE SEPARATE B/M NUMBER

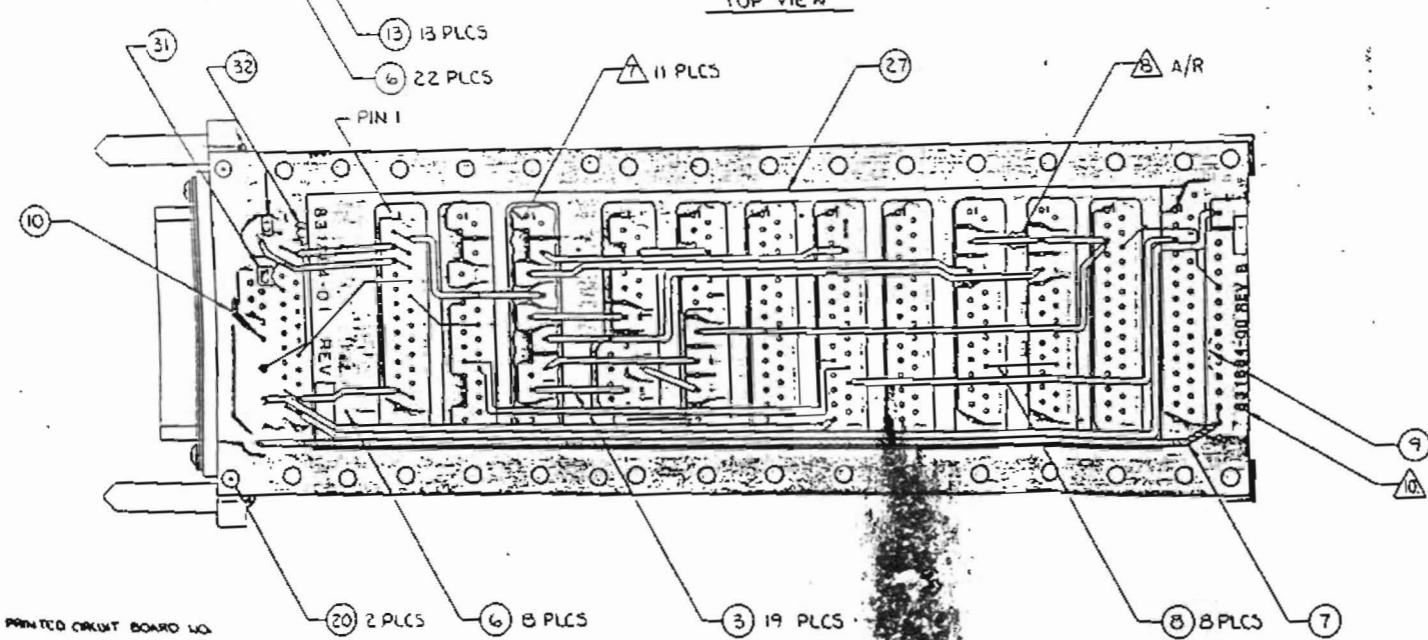
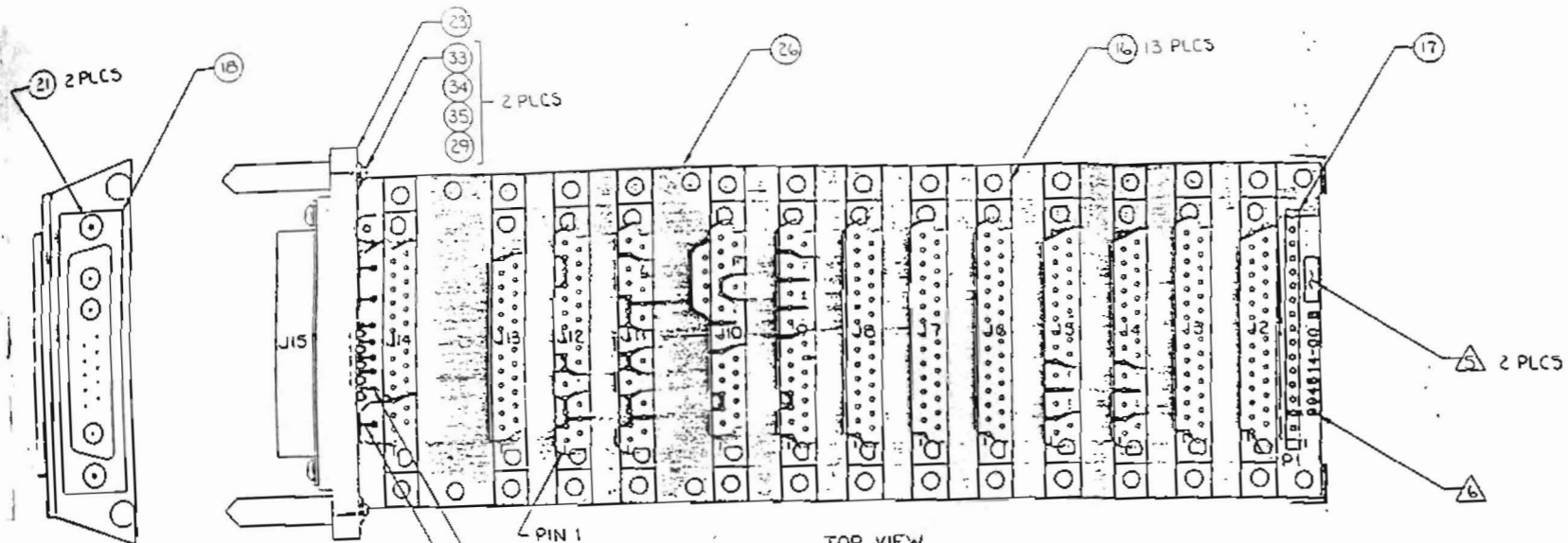
UNLESS OTHERWISE SPECIFIED DIMENSIONS ARE IN INCHES	DRAWING NO. C-994513-00	<b>SOUTHCAM INTERNATIONAL INC.</b> 2210 MEYERS AVENUE ESCUNDO, CALIFORNIA 92025 U.S.A.
TOLERANCES	CHECKED BY	
LINEAR .1X .2X .3X .4X .5X .6X .7X .8X .9X 1.0X 1.5X 2.0X 3.0X 4.0X 5.0X 6.0X 8.0X 10.0X	DESIGNED BY	
ANGULAR .1X .2X .3X .4X .5X .6X .7X .8X .9X 1.0X 1.5X 2.0X 3.0X 4.0X 5.0X 6.0X 8.0X 10.0X	APPROVED BY	
HOLE PER AND 1000	RELEASED BY	<b>SCHMATIC DIAGRAM, POWER AMPLIFIER (A13)</b> M508
ALL MACHINED SURFACES		
FINISH	MATERIAL	SIZE C DRAWING NUMBER 994513-00 SCALE NONE SHEET 3 OF 3 CODE IDENT NUMBER 52427

COMMERCIAL	MILITARY	HEAT ASSY

871883-00



CONTRACT NO.	DESCRIPTION	DATE	CHK	DATE	APPROVED
1000	PROD. REL PER DCN 8629		SRM	12/27/77	A.C.W.
1000	CHANGE PER DCN 8629		SRM	12/27/77	



- 1. RUBBER STAMP PRINTED CIRCUIT BOARD NO.
- 2. FROM CONNECTOR LEADS A SHORT AS POSSIBLE EXCEPT WHEN EXTERNAL CONNECTION IS MADE.
- 3. WELDER ITEMS 3 TO ITEM 27.
- 4. WELDER ITEM 27 TO ITEM 26 SLOTTED AREAS.
- 5. RUBBER STAMP ASSEMBLY NO.
- 6. IDENTIFY WITH LATEST REVISION.
- 7. ALL DIMENSIONS ARE IN INCHES UNLESS OTHERWISE SPECIFIED.
- 8. ALL DIMENSIONS ARE SPECIFIED IN MICROINCHES UNLESS OTHERWISE SPECIFIED.
- 9. DIMENSIONS SHOWN ARE SPECIFIED IN MICROINCHES UNLESS OTHERWISE SPECIFIED.
- 10. DIMENSIONS SHOWN ARE SPECIFIED IN MICROINCHES UNLESS OTHERWISE SPECIFIED.
- 11. DIMENSIONS SHOWN ARE SPECIFIED IN MICROINCHES UNLESS OTHERWISE SPECIFIED.
- 12. DIMENSIONS SHOWN ARE SPECIFIED IN MICROINCHES UNLESS OTHERWISE SPECIFIED.
- 13. DIMENSIONS SHOWN ARE SPECIFIED IN MICROINCHES UNLESS OTHERWISE SPECIFIED.
- 14. DIMENSIONS SHOWN ARE SPECIFIED IN MICROINCHES UNLESS OTHERWISE SPECIFIED.
- 15. DIMENSIONS SHOWN ARE SPECIFIED IN MICROINCHES UNLESS OTHERWISE SPECIFIED.
- 16. DIMENSIONS SHOWN ARE SPECIFIED IN MICROINCHES UNLESS OTHERWISE SPECIFIED.
- 17. DIMENSIONS SHOWN ARE SPECIFIED IN MICROINCHES UNLESS OTHERWISE SPECIFIED.
- 18. DIMENSIONS SHOWN ARE SPECIFIED IN MICROINCHES UNLESS OTHERWISE SPECIFIED.
- 19. DIMENSIONS SHOWN ARE SPECIFIED IN MICROINCHES UNLESS OTHERWISE SPECIFIED.
- 20. DIMENSIONS SHOWN ARE SPECIFIED IN MICROINCHES UNLESS OTHERWISE SPECIFIED.
- 21. DIMENSIONS SHOWN ARE SPECIFIED IN MICROINCHES UNLESS OTHERWISE SPECIFIED.
- 22. DIMENSIONS SHOWN ARE SPECIFIED IN MICROINCHES UNLESS OTHERWISE SPECIFIED.
- 23. DIMENSIONS SHOWN ARE SPECIFIED IN MICROINCHES UNLESS OTHERWISE SPECIFIED.
- 24. DIMENSIONS SHOWN ARE SPECIFIED IN MICROINCHES UNLESS OTHERWISE SPECIFIED.
- 25. DIMENSIONS SHOWN ARE SPECIFIED IN MICROINCHES UNLESS OTHERWISE SPECIFIED.
- 26. DIMENSIONS SHOWN ARE SPECIFIED IN MICROINCHES UNLESS OTHERWISE SPECIFIED.
- 27. DIMENSIONS SHOWN ARE SPECIFIED IN MICROINCHES UNLESS OTHERWISE SPECIFIED.
- 28. DIMENSIONS SHOWN ARE SPECIFIED IN MICROINCHES UNLESS OTHERWISE SPECIFIED.
- 29. DIMENSIONS SHOWN ARE SPECIFIED IN MICROINCHES UNLESS OTHERWISE SPECIFIED.
- 30. DIMENSIONS SHOWN ARE SPECIFIED IN MICROINCHES UNLESS OTHERWISE SPECIFIED.
- 31. DIMENSIONS SHOWN ARE SPECIFIED IN MICROINCHES UNLESS OTHERWISE SPECIFIED.
- 32. DIMENSIONS SHOWN ARE SPECIFIED IN MICROINCHES UNLESS OTHERWISE SPECIFIED.
- 33. DIMENSIONS SHOWN ARE SPECIFIED IN MICROINCHES UNLESS OTHERWISE SPECIFIED.
- 34. DIMENSIONS SHOWN ARE SPECIFIED IN MICROINCHES UNLESS OTHERWISE SPECIFIED.
- 35. DIMENSIONS SHOWN ARE SPECIFIED IN MICROINCHES UNLESS OTHERWISE SPECIFIED.

SEE SEPARATE BOM

PROPRIETARY RIGHTS

UNLESS OTHERWISE SPECIFIED DIMENSIONS ARE IN INCHES

CONTRACT NUMBER	994514-00
DRAWN BY	SRM
CHECK BY	SRM
DESIGNER	SRM
MACH ENGR	SRM
ELECT ENGR	SRM
PROJECT	SRM
RELEASE	SRM
DESIGN ACTIVITY APPROVAL	
DESIGN APPROVAL	

TERRACOM

ASSEMBLY DRAWING - (A14)  
INTERCONNECT BOARD

SITE FSCM NO. 054296 DRAWING NUMBER 994514-00

SCALE 2:1 SHEET 1 OF 2

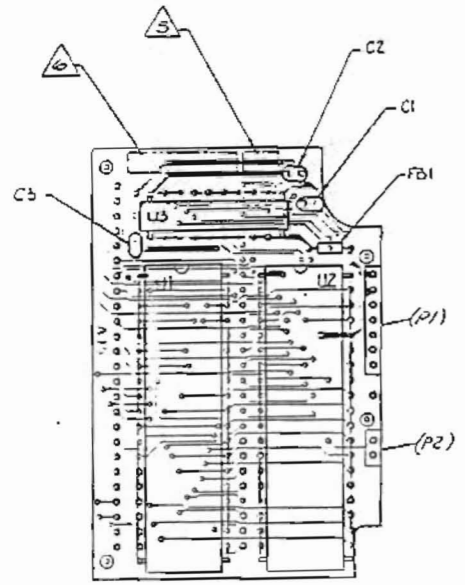
REV	DATE	BY	CHKD	QTY REQD	USED ON	NEXT ASST
1						
2						
3						
4						
5						
6						
7						
8						
9						
10						
11						
12						
13						
14						
15						
16						
17						
18						
19						
20						
21						
22						
23						
24						
25						
26						
27						
28						
29						
30						
31						
32						
33						
34						
35						

994514-00 Rev B

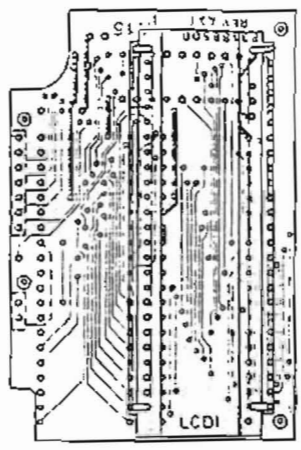
1 of 2

994514-00 Rev B

A



TOP VIEW  
(COMPONENT SIDE)



BOTTOM VIEW  
(CIRCUIT SIDE)

- 8 MAX. COMPONENT HEIGHT IS 0.29 INCHES.
- 7. LEAD EXTENSIONS SHALL BE LESS THAN 0.03 INCHES.
- 6. IDENTIFY WITH PART NUMBER PER 16000933.
- 5. IDENTIFY WITH LATEST REVISION.
- 4. ALL DIMS ARE UNLESS OTHERWISE SPECIFIED.
- 3. DIM VALUES ARE SPECIFIED IN MICROINCHES.
- 2. CAPACITOR VALUES ARE SPECIFIED IN MICROFARADS WHEN REPRESENTED BY WHOLE NUMBERS, AND BY MICROFARADS WHEN REPRESENTED BY DECIMALS.
- 1. RESISTOR VALUES ARE SPECIFIED IN OHMS AND ARE 1/4W, 1%. 100

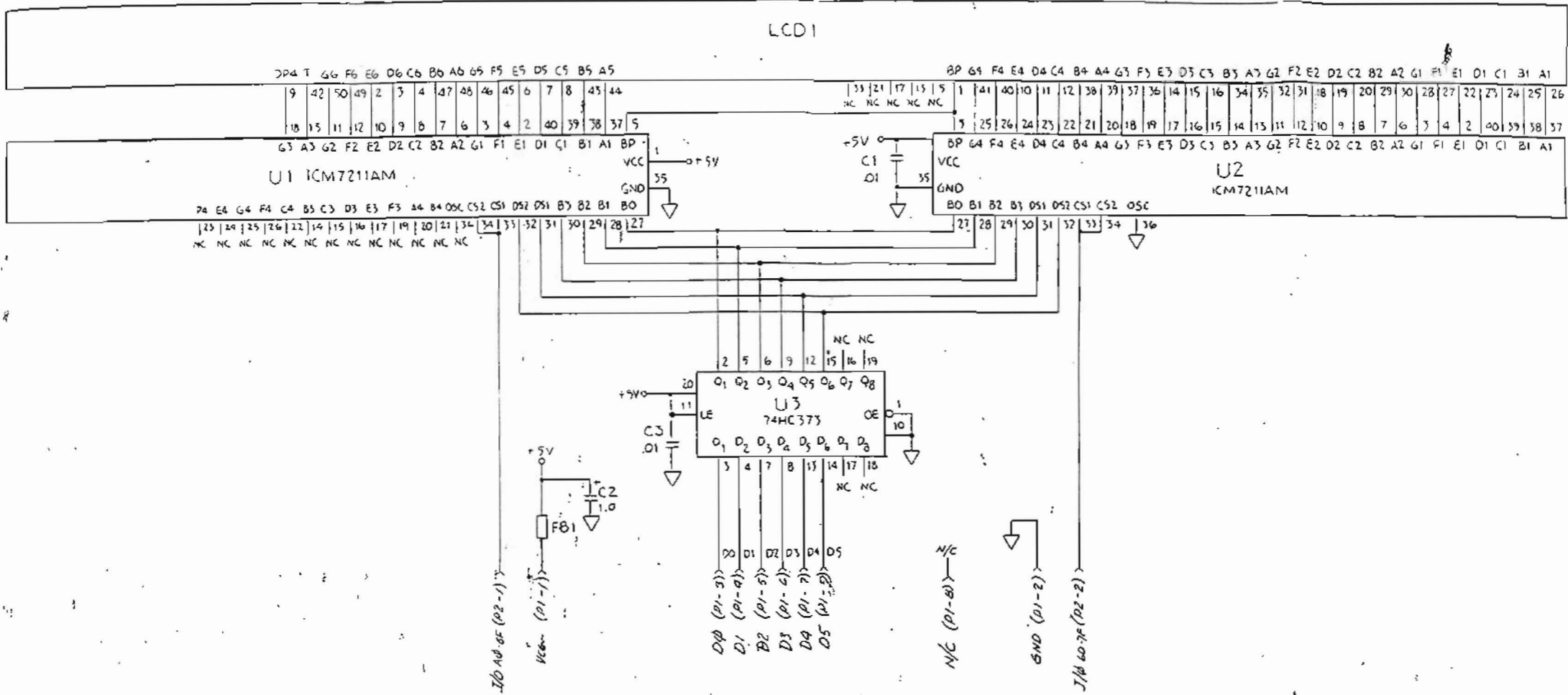
NOTE: UNLESS OTHERWISE SPECIFIED

REV	DESCRIPTION	DATE	BY	CHKD	QTY REQD	USED ON	NEXT ASST
7	SCHEMATIC						
6	SCHEMATIC						
5	SCHEMATIC						
4	SCHEMATIC						
3	SCHEMATIC						
2	SCHEMATIC						
1	SCHEMATIC						
0	SCHEMATIC						

UNLESS OTHERWISE SPECIFIED		CONTRACT NUMBER	
DIMENSIONS ARE IN INCHES		DRAWN BY: <i>[Signature]</i> P.J.D.	
LINEAR XX = .03	ANGULAR IN D° 30'	CHECK BY: <i>[Signature]</i>	DESIGNER: <i>[Signature]</i>
XXX = .010		MECH ENG: <i>[Signature]</i>	ELECT ENG: <i>[Signature]</i>
ALL MACHINED SURFACES	FINISH: <i>[Symbol]</i>	PROJECT: <i>[Signature]</i>	RELEASE: <i>[Signature]</i>
		DESIGN ACTIVITY APPROVAL	
TERRACOM		ASSEMBLY DRAWING - DISPLAY BOARD, AIS	
SIZE: D	FSCM NO: 054298	DRAWING NUMBER: 994515-00	MSOA: 100
SCALE:		SHEET: 1	TOTAL: 2

994515-00 1 OF 2

994515-00 1 OF 2



U	P	F81	LCD	C
3	2	1	1	3

FOR PARTS LIST SEE SEPARATE B/M NUMBER

UNLESS OTHERWISE SPECIFIED	QUANTITY	DESCRIPTION	DATE	BY
CONNECTIONS ARE IN INCHES	CHECKED BY	DESIGN		
TOLERANCES	APPROVED BY			
LINEAR				
ALL DIMENSIONS UNLESS OTHERWISE SPECIFIED				

SOUTHCOM INTERNATIONAL INC.  
2710 MEYERS AVENUE  
ESCONDIDO, CALIFORNIA 92025  
U.S.A.

**SCHEMATIC DIAGRAM, DISPLAY OD (A15)**

M50A

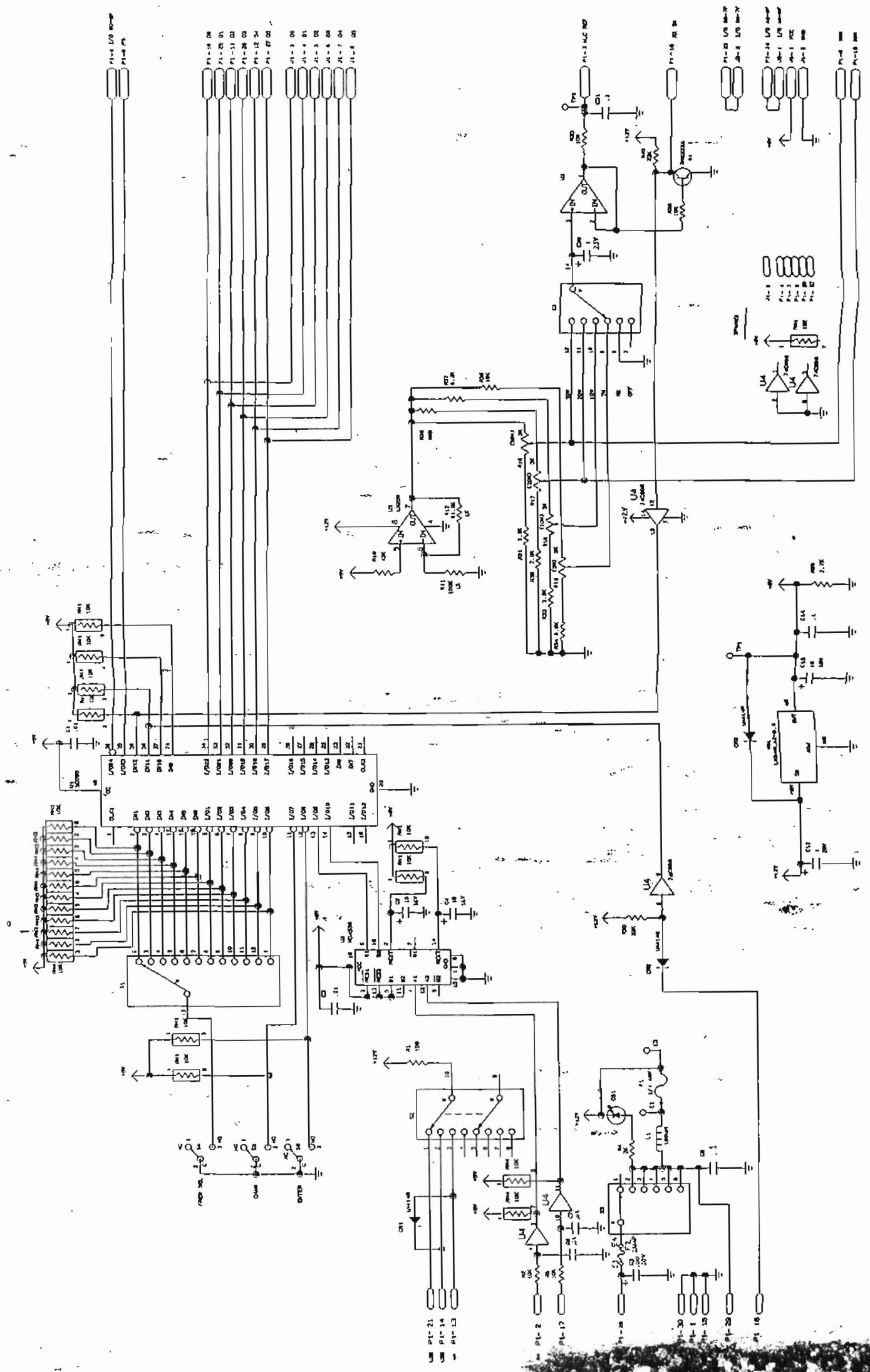
DATE: 1984 515-00  
SCALE: 1:1  
SHEET: 2 OF 2  
IDENT NUMBER: 52427

994515-00 2 OF 2

994515-00 A01

SIZE FSCM NO. DRAWING NUMBER PART NO. IIR  
 D 054286 994516-00 0000 ADD  
 SCALE \_\_\_\_\_ SHEET 2 OF 2

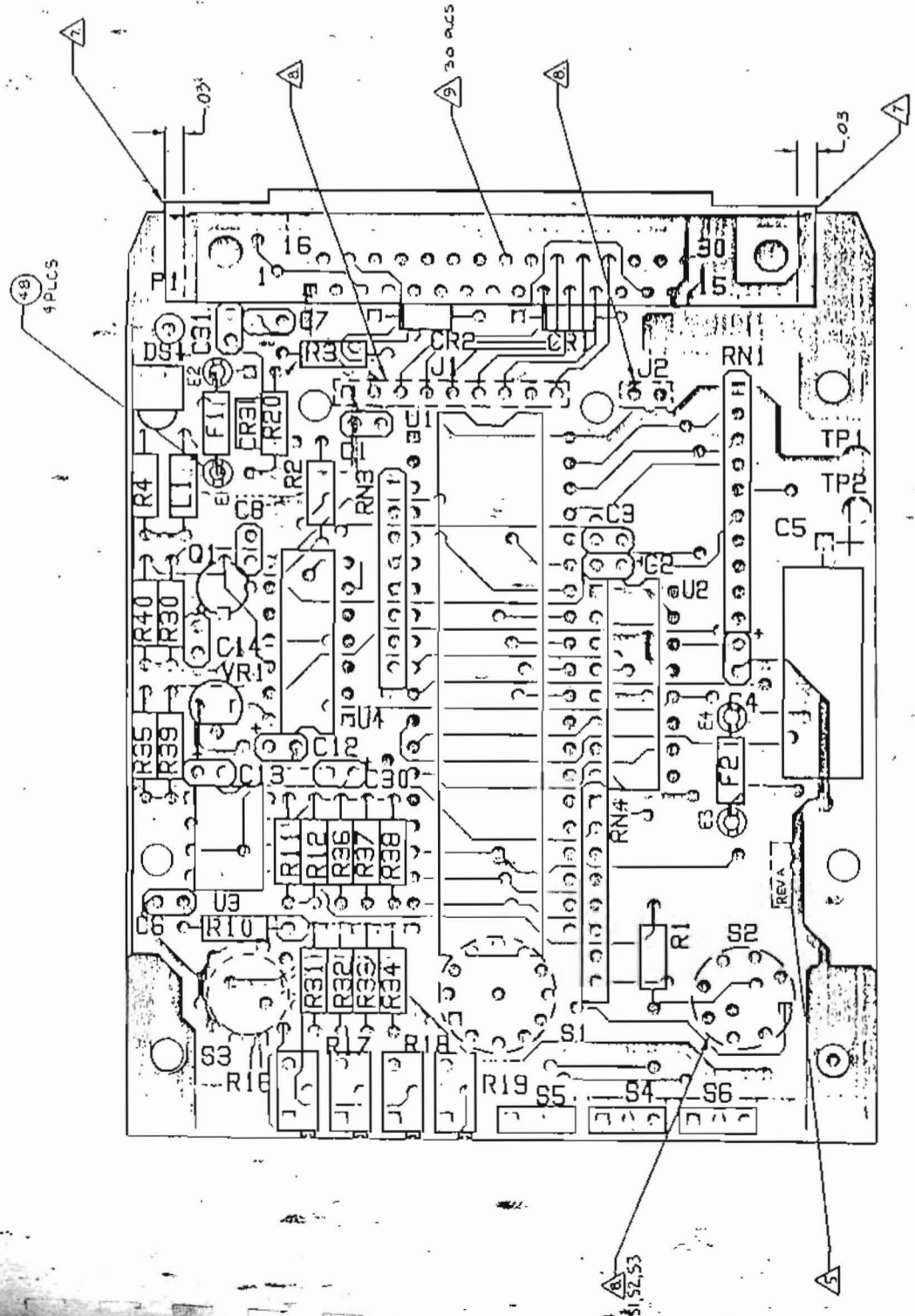
PROPRIETARY RIGHTS  
 THE INFORMATION CONTAINED HEREIN IS UNCLASSIFIED EXCEPT WHERE SHOWN OTHERWISE. IT IS THE PROPERTY OF THE UNITED STATES GOVERNMENT AND IS LOANED TO YOUR AGENCY; IT AND ITS CONTENTS ARE NOT TO BE DISTRIBUTED OUTSIDE YOUR AGENCY.



OTHERWISE SPECIFIED

PROPERTY RIGHTS  
 The information contained on this drawing is the property of TerraCom, Inc. and is to be used only for the purpose of manufacturing the product shown hereon. No part of this drawing is to be reproduced, stored in a retrieval system, or transmitted in any form or by any means, electronic, mechanical, photocopying, recording, or by any information storage and retrieval system, without the prior written permission of TerraCom, Inc.

UNLESS OTHERWISE SPECIFIED CONTRACT NUMBER		DESIGNER	DATE
DIMENSIONS ARE IN INCHES		CHECKED BY	DATE
LINEAR	XX ± 0.03	DESIGNER	DATE
ANGULAR	XX ± 0.30	ELECT. ENG.	DATE
HOLE PER		DESIGNER	DATE
SURFACES		DESIGNER	DATE
FINISH		DESIGNER	DATE
TERRACOM		DESIGNER	DATE
ASSEMBLY DRAWING -		DESIGNER	DATE
FRONT PANEL BOARD A16		DESIGNER	DATE
SCALE 47/1		DESIGNER	DATE
SHEET 47/1		DESIGNER	DATE
DRAWING NUMBER 994516-00		DESIGNER	DATE
JOB NO. 05-4296		DESIGNER	DATE
SHEET TOP 2		DESIGNER	DATE



COMPONENT SIDE

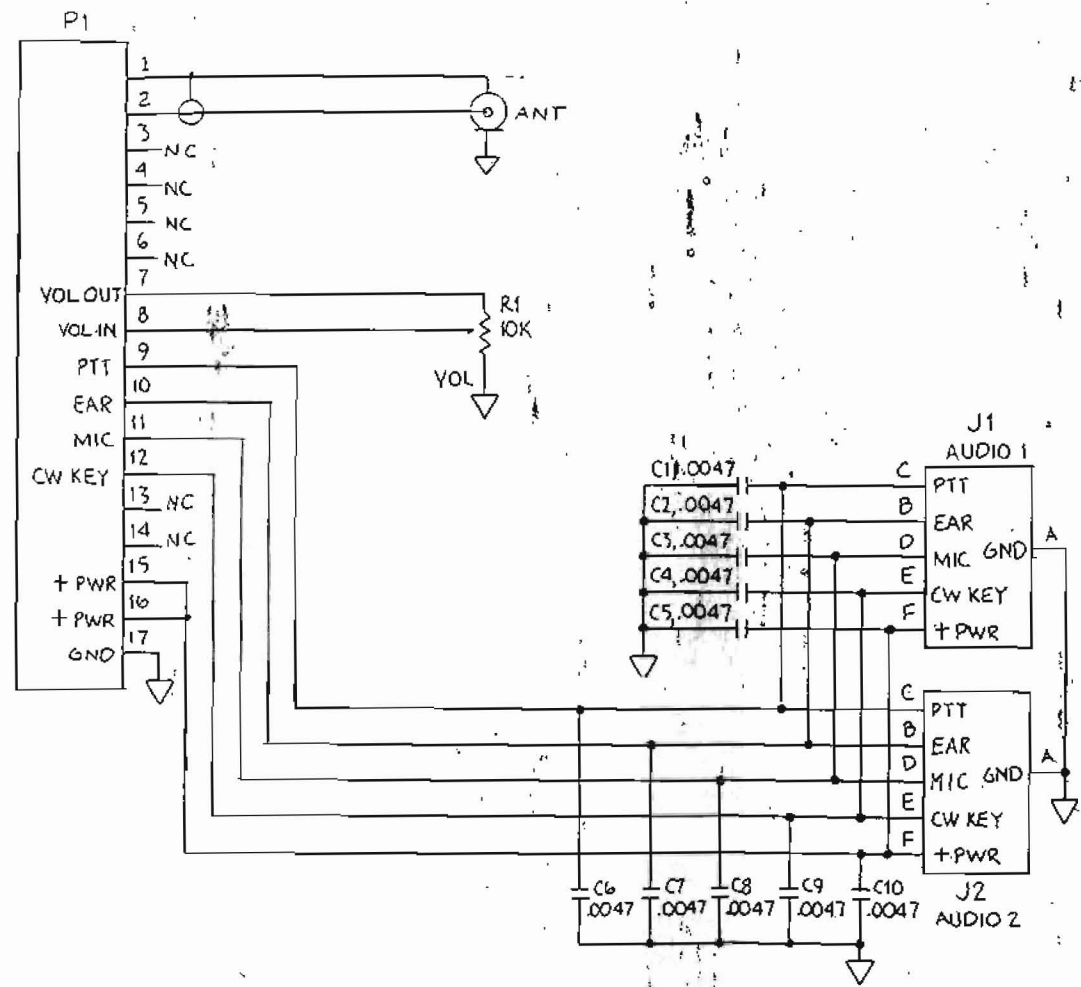
MAXIMUM COMPONENT HEIGHT = 0.29 IN.  
 ALL SOLDERING AND COMPONENT LEAD SHALL EXTEND BEYOND 0.03 IN.  
 PINS TO SOLDERING:  
 CONNECTOR PINS TO BE CUT FLUSH WITH BACKSIDE OF BOARD  
 ALL PINS ON BACKSIDE OF BOARD  
 ALL TO SOLDERING: CUT EDGE OFF CONNECTOR (PI) SIDES AS SHOWN

UNLESS OTHERWISE SPECIFIED

ITEM	DESCRIPTION	QTY	RECD	DATE	BY
1	M50 A	1	USED	DN	
2	PM522-00	1	USED	DN	
3	ASSEMBLY DRAWING	1	QTY	RECD	DN
4	NEXT ASSY				



REVISIONS		
ZONE	REV	DESCRIPTION
		REVISED & UPDATED 9/10/87
		REVISED 12-17-87



C	R	J	P		
10	1	2	1		

2. CAPACITOR VALUES ARE IN MICROFARADS, UNLESS OTHERWISE SPECIFIED.
1. RESISTORS ARE 1W, 10%, VALUES IN OHMS; UNLESS OTHERWISE SPECIFIED.

NOTE: UNLESS OTHERWISE SPECIFIED

QTY	REQD	COMMERCIAL	MILITARY	USED ON	NEXT ASSY

FOR PARTS LIST SEE SEPARATE B/W NUMBER 99451700

UNLESS OTHERWISE SPECIFIED DIMENSIONS ARE IN INCHES	DRAWN BY: [Signature]	SOUTHCAM INTERNATIONAL INC. 2210 MEYERS AVENUE ESCONDIDO, CALIFORNIA 92025 U.S.A.	
TOLERANCES	CHECKED BY: [Signature]	SCHEMATIC DIAGRAM, FRONT PANEL INTERCONNECT (A17) M50A	
LINEAR 3.0 0.20 SIX 0.20	DESIGN: [Signature]		
ANGULAR HOLE PER AND 10327 ALL MACHINED SURFACES	APPROVED BY: [Signature]	SCALE NONE SHEET 1 OF 1	
FINISH:	RELEASED BY: [Signature]	C 82631700	
MATERIAL:		CJDE IOENT NUMBER 52427	

82631700